



# **PARTS MANUAL**



# **NLB WATERBLAST UNITS**

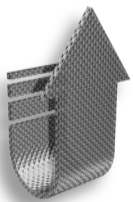
The **Jetstream Improved**™ repair parts in this manual are superior **direct replacements** for your worn NLB parts. These parts are manufactured in our modern, in-house, computer controlled machining facility.

We offer **Same-Day Shipment** for any part you need from our well stocked warehouse . . .

#### **Jetstream Extended Sales Hours**

M - F - **7:00 am - 6:00 pm** (C.S.T.)

Saturday - **9:00 am - 12:00 pm** (C.S.T.)



A **Jetstream Upgrade**™ can be substituted for any NLB component that is costly to repair or has become a maintenance problem.

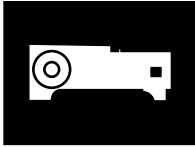
The **Jetstream Upgrade**™ shown opposite each NLB component in this manual generally has **fewer parts** and **cartridge-style** repair features. It will give your equipment **better-than new performance** with less maintenance downtime and operating costs.



## CONTENTS



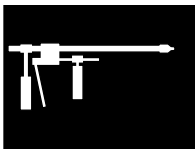
Fluid Ends .....Page 4



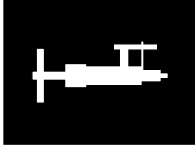
Power Ends .....Page 14



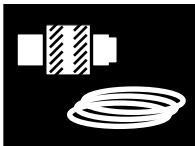
Safety Pop-Off Valve and Relief Valve .....Page 18



Cleaning Lances and Foot Control Valve .....Page 20

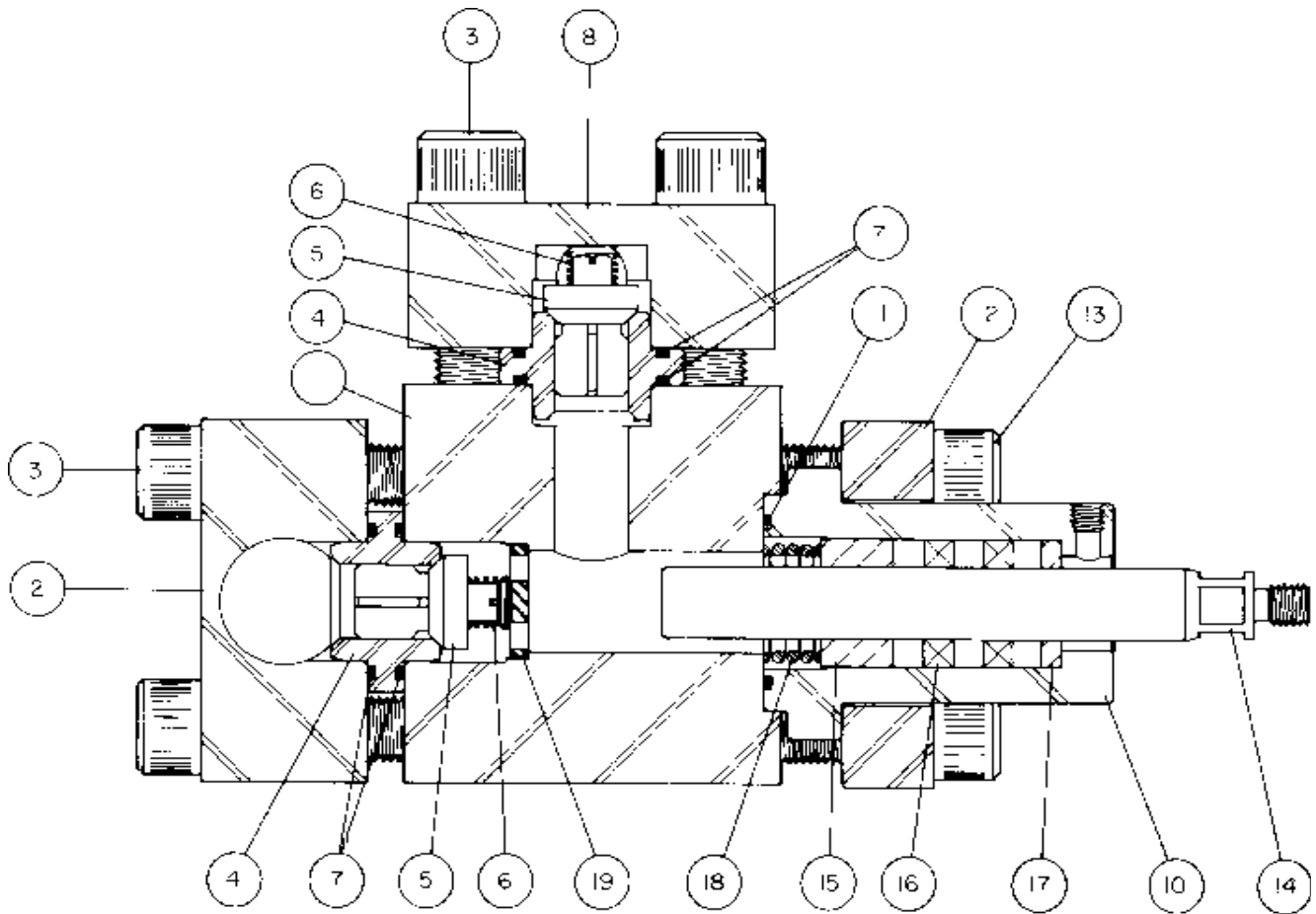


Throttle Control .....Page 23



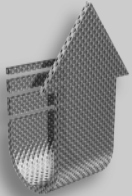
Abrasive Induction Nozzle .....Page 24  
Quick-Connect Couplings .....Page 25  
Hose .....Page 25

**800-231-8192 • 713-462-7000**



| ITEM | QTY | JETSTREAM IMPROVED™ PART NO. | DESCRIPTION  |
|------|-----|------------------------------|--|
| 1    | 1   | 50555                        | FLUID CYLINDER   |
| 2    | 1   | 50587                        | MANIFOLD, SUCTION  |
| 3    | 24  | 25609                        | CAPSCREW, SUCTION / DISCHARGE MANIFOLD                               |
| 4    | 6   | 50399                        | SEAT, SUCTION / DISCHARGE  |
| 5    | 6   | 50432                        | VALVE, SUCTION / DISCHARGE   |
| 6    | 6   | 26095                        | SPRING, SUCTION / DISCHARGE VALVE                                    |
| 7    | 12  | 25608                        | O-RING   |
| 8    | 1   | 50606                        | MANIFOLD, DISCHARGE  |
| 10   | 3   | 51137                        | STUFFING BOX   |
| 11   | 3   | 26125                        | O-RING   |
| 12   | 3   | 51142                        | FLANGE, STUFFING BOX   |
| 13   | 12  | 26220                        | CAPSCREW, STUFFING BOX FLANGE  |
| 14   | 3   | 51134<br>50489<br>51170      | PLUNGER, 7/8" DIA.<br>PLUNGER, 1" DIA.<br>PLUNGER, 1-1/8" DIA.       |
| 15   | 3   | 51155<br>51136<br>51143      | THROAT BUSHING, 7/8"<br>THROAT BUSHING, 1"<br>THROAT BUSHING, 1-1/8" |

| ITEM | QTY | JETSTREAM IMPROVED™ PART NO.     | DESCRIPTION  |
|------|-----|----------------------------------|--|
| 16   | 3   | 26196<br>26101<br>26117          | PACKING SET, 7/8"<br>PACKING SET, 1"<br>PACKING SET, 1-1/8"  |
| 17   | 3   | 51135<br>51161<br>51138          | RING, PACKING BACKUP, 7/8"<br>RING, PACKING BACKUP, 1"<br>RING, PACKING BACKUP, 1-1/8"   |
| 18   | 3   | 26097                            | SPRING, PACKING  |
| 19   | 1   | N/A                              | STOP, SUCTION VALVE  |
|      |     | 51157<br>51159<br>51195<br>51178 | <b>TOOLS</b> (not shown)<br>SOCKET ADAPTER (for Discharge Cover Capscrews)<br>SOCKET ADAPTER (for Stuffing Box Flange Capscrews)<br>PACKING DRIFT (for removing Packing)<br>SEAT PULLER (for removing Suction and Discharge Valve Seats) |

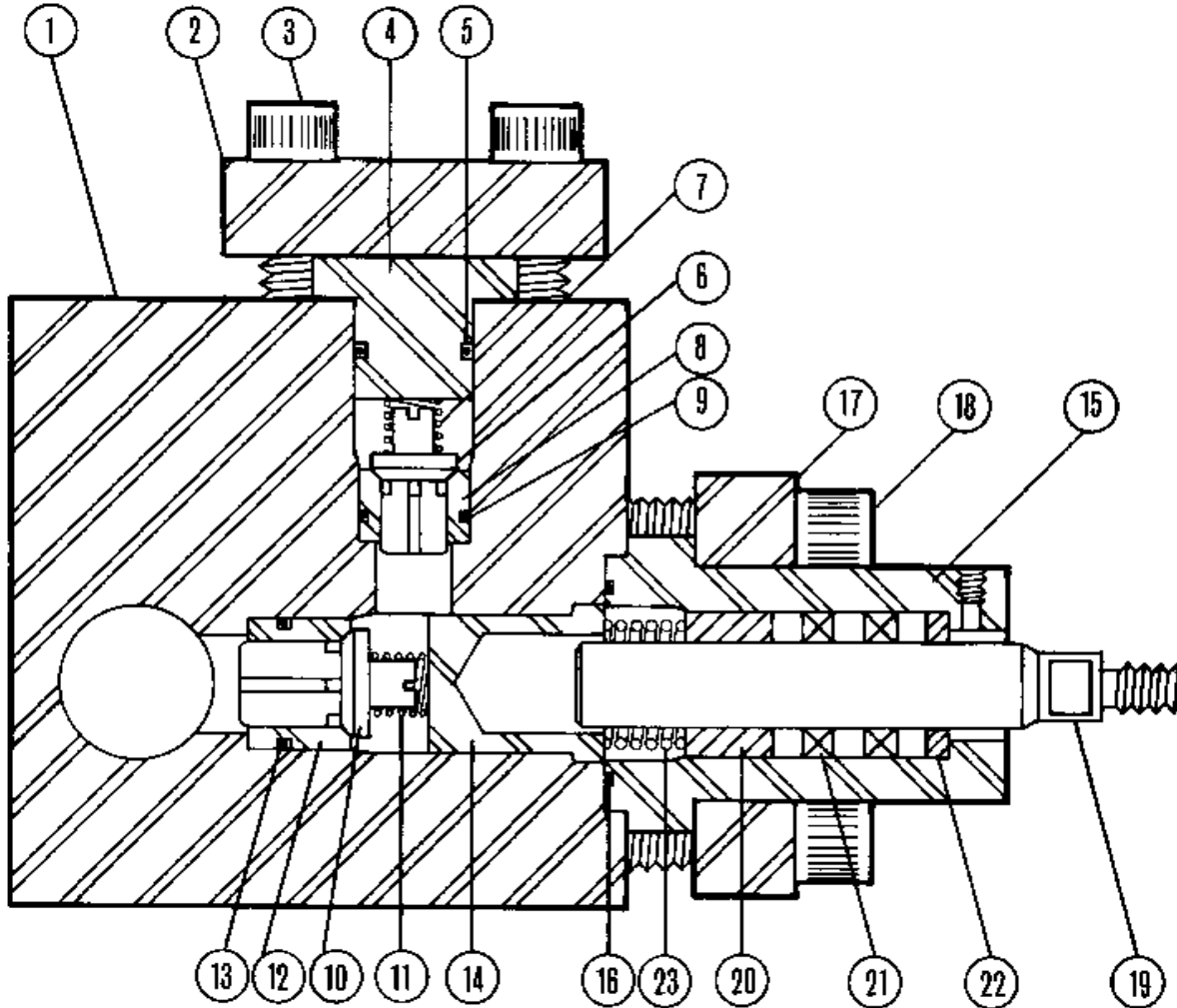


**If your 1012 requires major repair, or to achieve pressures up to 40,000 psi  
UPGRADE TO JETSTREAM'S UNx FLUID END**



**THE SIMPLE UNx**

- 56% fewer parts than the 1012
- One piece of brass
- One packing ring
- One valve
- No fluid cylinder to crack
- Cuts your pump's downtime and repair costs
- No special tools needed
- Utilizes cartridge-style overhaul
- In-line valve design



| ITEM | QTY | JETSTREAM IMPROVED™ PART NO. | DESCRIPTION                     |
|------|-----|------------------------------|---------------------------------|
| 1    | 1   | 51144                        | FLUID CYLINDER                  |
| 2    | 3   | 51133                        | COVER, DISCHARGE VALVE          |
| 3    | 12  | 26214                        | CAPSCREW, DISCHARGE VALVE COVER |
| 4    | 3   | 51140                        | STOP, DISCHARGE VALVE           |
| 5    | 3   | 26122                        | O-RING                          |
| 6    | 3   | 50363                        | VALVE, DISCHARGE                |
| 7    | 3   | 26095                        | SPRING, DISCHARGE VALVE         |
| 8    | 3   | 50396                        | SEAT, DISCHARGE VALVE           |
| 9    | 3   | 26090                        | O-RING                          |
| 10   | 3   | 50580                        | VALVE, SUCTION                  |
| 11   | 3   | 26095                        | SPRING, SUCTION VALVE           |
| 12   | 3   | 50393                        | SEAT, SUCTION VALVE             |
| 13   | 3   | 26128                        | O-RING                          |
| 14   | 3   | 50367                        | STOP, SUCTION VALVE             |
| 15   | 3   | 51137                        | STUFFING BOX                    |
| 16   | 3   | 26125                        | O-RING                          |
| 17   | 3   | 51142                        | FLANGE, STUFFING BOX            |
| 18   | 12  | 26220                        | CAPSCREW, STUFFING BOX FLANGE   |

| ITEM | QTY | JETSTREAM<br>IMPROVED™<br>PART NO. | DESCRIPTION  |
|------|-----|------------------------------------|--|
| 19   | 3   | 51134<br>50489<br>51170            | PLUNGER, 7/8"<br>PLUNGER, 1"<br>PLUNGER, 1-1/8"  |
| 20   | 3   | 51155<br>51136<br>51143            | THROAT BUSHING, 7/8"<br>THROAT BUSHING, 1"<br>THROAT BUSHING, 1-1/8"   |
| 21   | 3   | 26196<br>26101<br>26117            | PACKING SET, 7/8"<br>PACKING SET, 1"<br>PACKING SET, 1-1/8"  |
| 22   | 3   | 51135<br>51161<br>51138            | RING, PACKING BACKUP, 7/8"<br>RING, PACKING BACKUP, 1"<br>RING, PACKING BACKUP, 1-1/8"   |
| 23   | 3   | 26097                              | SPRING, PACKING  |
|      |     | 51157<br>51159<br>51195<br>51178   | <b>TOOLS</b> (not shown)<br>SOCKET ADAPTER (for Discharge Cover Capscrews)<br>SOCKET ADAPTER (for Stuffing Box Flange Capscrews)<br>PACKING DRIFT (for removing Packing)<br>SEAT PULLER (for removing Suction and Discharge Valve Seats) |

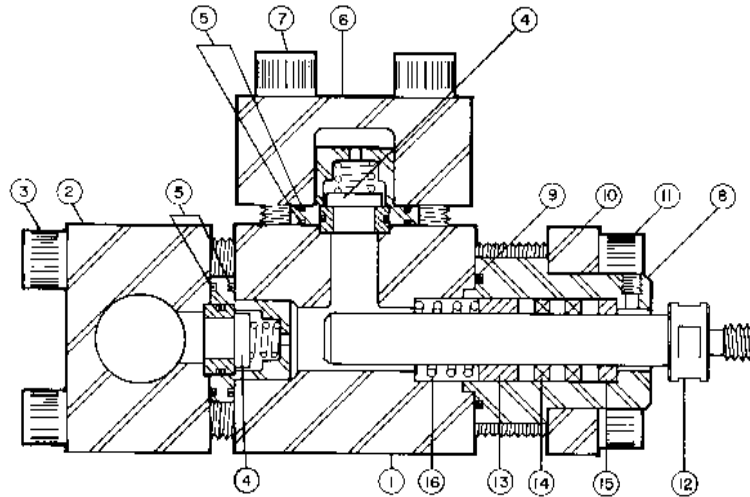


**If your 1012 requires major repair, or to achieve pressures up to 40,000 psi  
UPGRADE TO JETSTREAM'S UN<sub>x</sub> FLUID END**

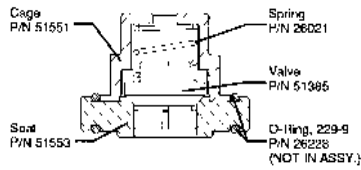


**THE SIMPLE UN<sub>x</sub>**

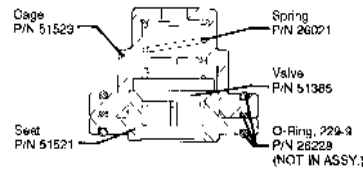
- 53% fewer parts than the 1012
- One piece of brass
- One packing ring
- One valve
- No fluid cylinder to crack
- Cuts your pump's downtime and repair costs
- No special tools needed
- Utilizes cartridge-style overhaul
- In-line valve design



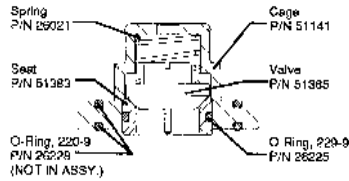
VALVE ASSEMBLY OPTIONS



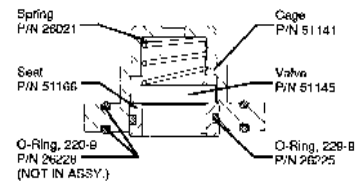
NEW "JETSTREAM IMPROVED", P/N 51545  
Jetstream Patent No. 4,768,933



NLB "SANDWICH" STYLE, P/N 51555



EARLIER WING STYLE, P/N 51390



EARLIER DISC STYLE, P/N 51160

| ITEM | QTY | JETSTREAM IMPROVED™ PART NO.     | DESCRIPTION   |
|------|-----|----------------------------------|---|
| 1    | 1   | 51173                            | FLUID CYLINDER  |
| 2    | 1   | 51139                            | MANIFOLD, SUCTION   |
| 3    | 12  | 26209                            | CAPSCREW, SUCTION MANIFOLD  |
| 4    | 6   | 51545<br>51555<br>51390<br>51160 | VALVE ASSEMBLY, SUCTION / DISCHARGE (shown above)<br>NEW "JETSTREAM IMPROVED"<br>NLB "SANDWICH" STYLE<br>EARLIER "WING" STYLE<br>EARLIER "DISC" STYLE |
| 5    | 12  | 26228                            | O-RING  |
| 6    | 1   | 51172                            | MANIFOLD, DISCHARGE   |
| 7    | 8   | 26212                            | CAPSCREW, DISCHARGE MANIFOLD  |
| 8    | 3   | 51146                            | STUFFING BOX  |
| 9    | 3   | 26130                            | O-RING  |
| 10   | 3   | 51168                            | FLANGE, STUFFING BOX  |
| 11   | 12  | 26218                            | CAPSCREW, STUFFING BOX FLANGE   |

| ITEM | QTY | JETSTREAM IMPROVED™ PART NO.         | DESCRIPTION   |
|------|-----|--------------------------------------|---|
| 12   | 3   | 51147<br>51148<br>51149<br>51150     | PLUNGER, 1-1/8" DIA.<br>PLUNGER, 1-1/4" DIA.<br>PLUNGER, 1-3/8" DIA.<br>PLUNGER, 1-1/2" DIA.  |
| 13   | 3   | 51165<br>51163<br>51158<br>51153     | THROAT BUSHING, 1-1/8"<br>THROAT BUSHING, 1-1/4"<br>THROAT BUSHING, 1-3/8"<br>THROAT BUSHING, 1-1/2"  |
| 14   | 3   | 26230<br>26223<br>26217<br>26219     | PACKING SET, 1-1/8"<br>PACKING SET, 1-1/4"<br>PACKING SET, 1-3/8"<br>PACKING SET, 1-1/2"  |
| 15   | 3   | 51171<br>51167<br>51164<br>51151     | RING, PACKING BACKUP, 1-1/8"<br>RING, PACKING BACKUP, 1-1/4"<br>RING, PACKING BACKUP, 1-3/8"<br>RING, PACKING BACKUP, 1-1/2"  |
| 16   | 3   | 26204<br><br>51159<br>51201<br>51195 | SPRING, PACKING<br><br><b>TOOLS</b> (not shown)<br>SOCKET ADAPTER, 3/4" (for Suction Manifold and Stuffing Box Flange Capscrews)<br>SOCKET ADAPTER, 7/8" (for Discharge Manifold Capscrews)<br>PACKING DRIFT (for removing Packing) |



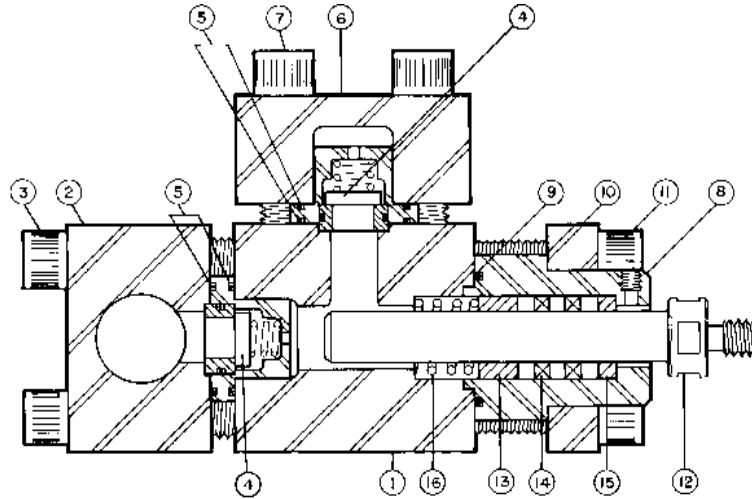
If your 10150 or 10200 requires major repair, or to achieve pressures up to 40,000 psi

**UPGRADE TO JETSTREAM'S UNx FLUID END**

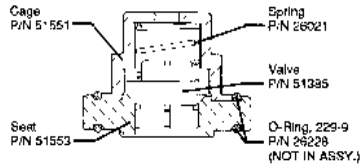


**THE SIMPLE UNx**

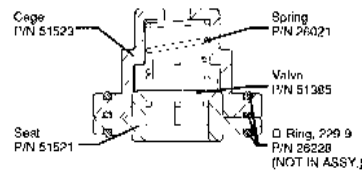
- 47% fewer parts than the 10150 or 10200
- One piece of brass
- One packing ring
- One valve
- No fluid cylinder to crack
- Cuts your pump's downtime and repair costs
- No special tools needed
- Utilizes cartridge-style overhaul
- In-line valve design



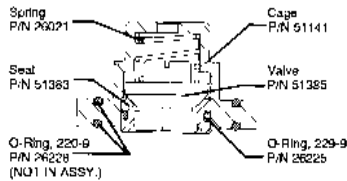
VALVE ASSEMBLY OPTIONS



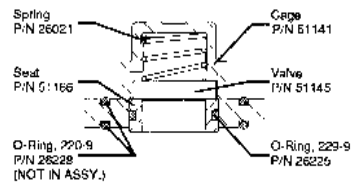
NEW "JETSTREAM IMPROVED", P/N 51545  
Jetstream Patent No. 4,769,933



NLB "SANDWICH" STYLE, P/N 51555



EARLIER WING STYLE, P/N 51390



EARLIER DISC STYLE, P/N 51160

| ITEM | TD-60 TRIPLEX PART NO. | QD-100 QUINTUPLEX PART NO.       | DESCRIPTION   |
|------|------------------------|----------------------------------|---|
| 1    | 1                      | COMM                             | FLUID CYLINDER  |
| 2    | 1                      | COMM                             | MANIFOLD, SUCTION   |
| 3    | 20                     | 26209                            | CAPSCREW, SUCTION MANIFOLD  |
| 4    | 10                     | 51545<br>51555<br>51390<br>51160 | VALVE ASSEMBLY, SUCTION / DISCHARGE (shown above)<br>NEW "JETSTREAM IMPROVED" STYLE<br>NLB "SANDWICH" STYLE<br>EARLIER "WING" STYLE<br>EARLIER "DISC" STYLE |
| 5    | 20                     | 26228                            | O-RING  |
| 6    | 1                      | COMM                             | MANIFOLD, DISCHARGE   |
| 7    | 16                     | 26212                            | CAPSCREW, DISCHARGE MANIFOLD  |
| 8    | 5                      | 51146                            | STUFFING BOX  |
| 9    | 5                      | 26130                            | O-RING  |
| 10   | 5                      | 51168                            | FLANGE, STUFFING BOX  |
| 11   | 20                     | 26218                            | CAPSCREW, STUFFING BOX FLANGE   |

| ITEM | TD-60<br>TRIPLEX<br>PART NO. | QD-100<br>QUINTUPLEX<br>PART NO.     | DESCRIPTION   |
|------|------------------------------|--------------------------------------|---|
| 12   | 5                            | 51147<br>51148<br>51149<br>51150     | PLUNGER, 1-1/8" DIA.<br>PLUNGER, 1-1/4" DIA.<br>PLUNGER, 1-3/8" DIA.<br>PLUNGER, 1-1/2" DIA.  |
| 13   | 5                            | 51165<br>51163<br>51158<br>51153     | THROAT BUSHING, 1-1/8"<br>THROAT BUSHING, 1-1/4"<br>THROAT BUSHING, 1-3/8"<br>THROAT BUSHING, 1-1/2"  |
| 14   | 5                            | 26230<br>26223<br>26217<br>26219     | PACKING SET, 1-1/8"<br>PACKING SET, 1-1/4"<br>PACKING SET, 1-3/8"<br>PACKING SET, 1-1/2"  |
| 15   | 5                            | 51171<br>51167<br>51164<br>51151     | RING, PACKING BACKUP, 1-1/8"<br>RING, PACKING BACKUP, 1-1/4"<br>RING, PACKING BACKUP, 1-3/8"<br>RING, PACKING BACKUP, 1-1/2"  |
| 16   | 5                            | 26204<br><br>51159<br>51201<br>51195 | SPRING, PACKING<br><br><b>TOOLS</b> (not shown)<br>SOCKET ADAPTER (for Suction Manifold and Stuffing Box Flange Capscrews)<br>SOCKET ADAPTER (for Discharge Manifold Capscrews)<br>PACKING DRIFT (for removing Packing) |



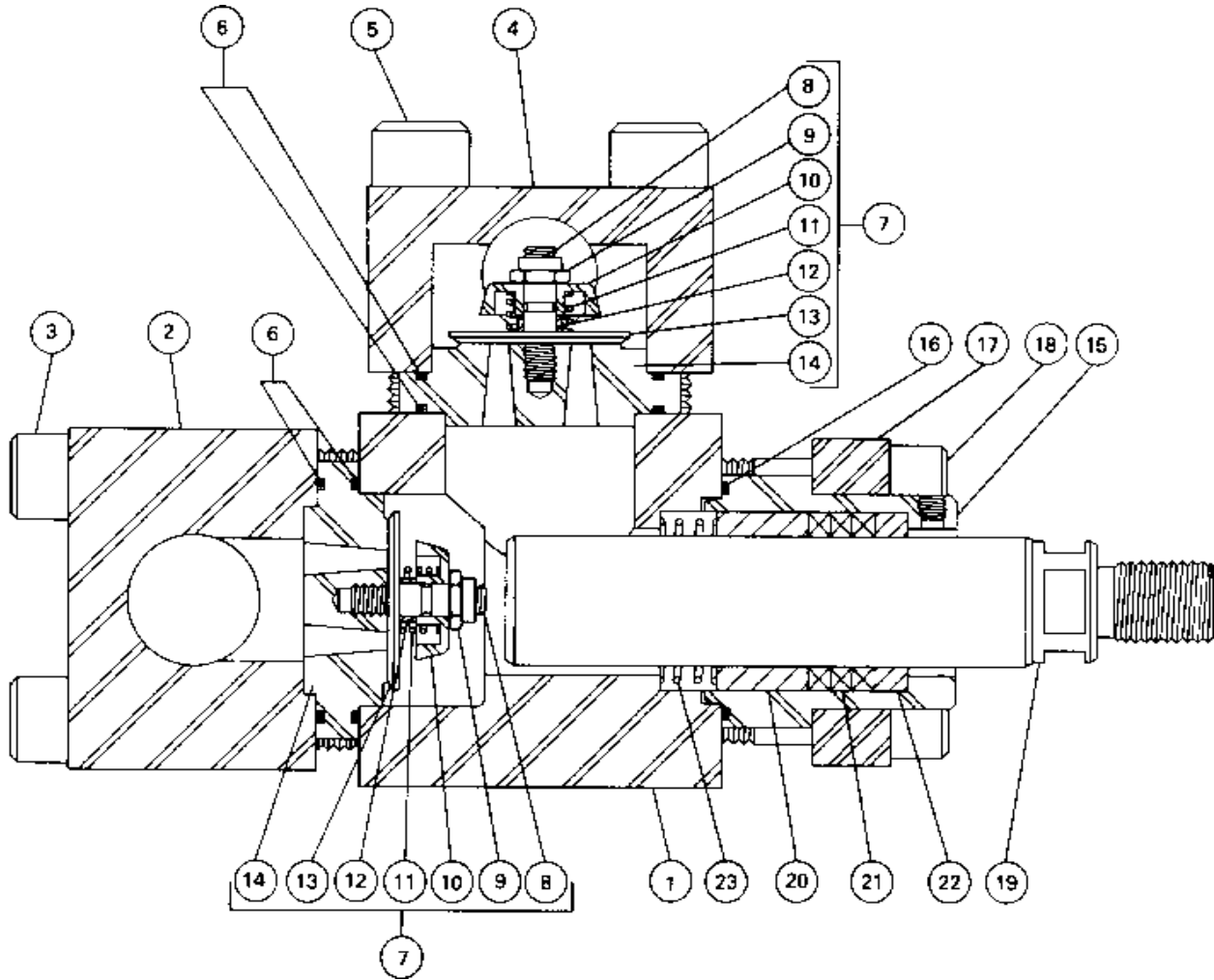
If your 10250 requires major repair, or to achieve pressures up to 40,000 psi

**UPGRADE TO JETSTREAM'S UNx FLUID END**



**THE SIMPLE UNx**

- 62% fewer parts than the 10250
- One piece of brass
- One packing ring
- One valve
- No fluid cylinder to crack
- Cuts your pump's downtime and repair costs
- No special tools needed
- Utilizes cartridge-style overhaul
- In-line valve design



| ITEM | QTY | JETSTREAM IMPROVED™ PART NO. | DESCRIPTION  |
|------|-----|------------------------------|--|
| 1    | 1   | 51442                        | FLUID CYLINDER                                       |
| 2    | 1   | 51444                        | MANIFOLD, SUCTION                                    |
| 3    | 12  | 26359                        | CAPSCREW, SUCTION MANIFOLD                           |
| 4    | 1   | 51446                        | MANIFOLD, DISCHARGE                                  |
| 5    | 12  | 26373                        | CAPSCREW, DISCHARGE MANIFOLD                         |
| 6    | 12  | 26374                        | O-RING, SUCTION / DISCHARGE VALVE                    |
| 7    | 6   | 51495                        | VALVE ASSEMBLY, SUCTION / DISCHARGE (consisting of:) |
| 8    | 6   | 51448                        | STUD, SUCTION / DISCHARGE VALVE                      |
| 9    | 6   | 26377                        | NUT, SUCTION / DISCHARGE VALVE                       |
| 10   | 6   | 51449                        | SPRING RETAINER, SUCTION / DISCHARGE VALVE           |
| 11   | 6   | 56401                        | SPRING, SUCTION / DISCHARGE VALVE                    |
| 12   | 6   | 51451                        | SPACER, SUCTION / DISCHARGE VALVE                    |
| 13   | 6   | 51453                        | VALVE, SUCTION / DISCHARGE VALVE                     |
| 14   | 6   | 51457                        | SEAT, SUCTION / DISCHARGE VALVE                      |
| 15   | 3   | 51459                        | STUFFING BOX   |
| 16   | 3   | 26403                        | O-RING, STUFFING BOX                                 |
| 17   | 3   | 51455                        | FLANGE, STUFFING BOX                                 |
| 18   | 12  | 26391                        | CAPSCREW, STUFFING BOX FLANGE                        |

| ITEM | QTY | JETSTREAM<br>IMPROVED™<br>PART NO. | DESCRIPTION  |
|------|-----|------------------------------------|--|
| 19   | 3   | 51461<br>51384                     | PLUNGER, 1-3/4" DIA.<br>PLUNGER, 2" DIA.                 |
| 20   | 3   | 51463<br>51392                     | BUSHING, THROAT, 1-3/4"<br>BUSHING, THROAT, 2"           |
| 21   | 3   | 26393<br>26396                     | PACKING SET, 1-3/4"<br>PACKING SET, 2"                   |
| 22   | 3   | 51467<br>51388                     | RING, PACKING BACKUP, 1-3/4"<br>RING, PACKING BACKUP, 2" |
| 23   | 3   | 26399                              | SPRING, PACKING  |

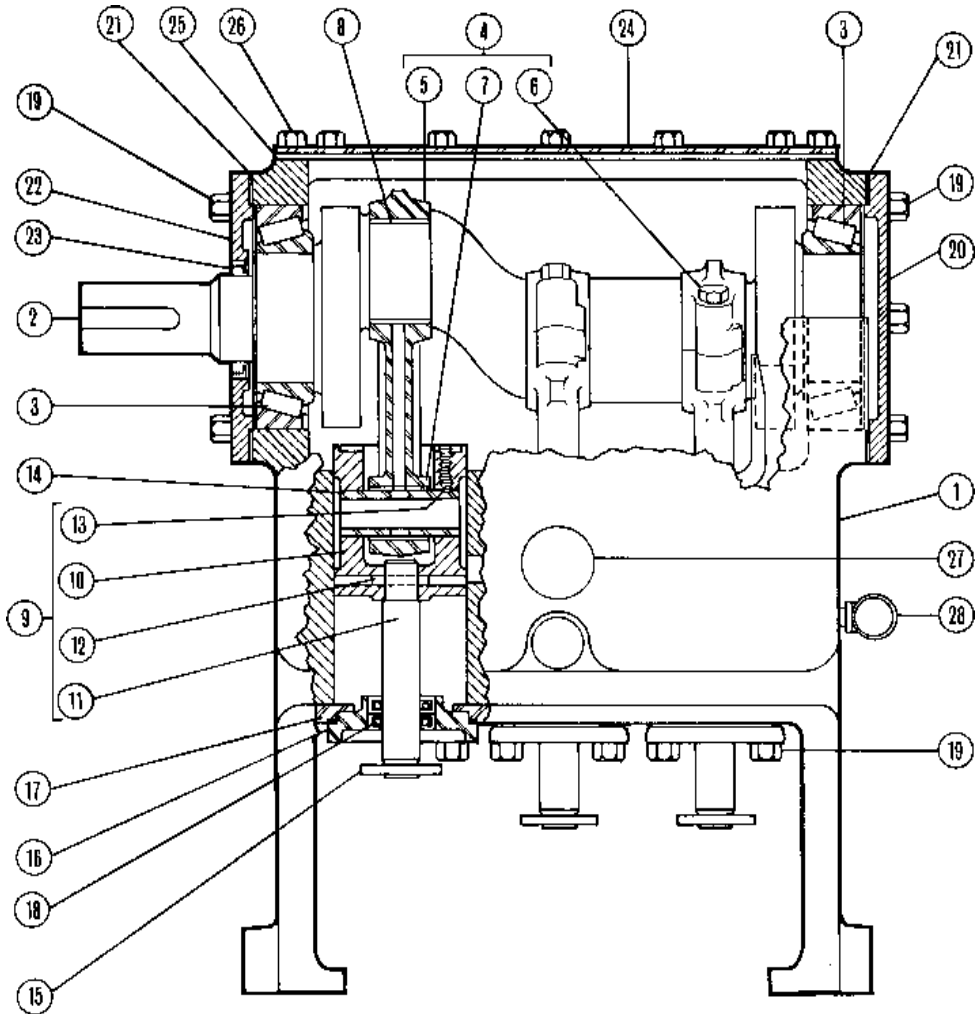


If your 10150 "B" requires major repair, or to achieve pressures up to 40,000 psi  
**UPGRADE TO JETSTREAM'S UN<sub>x</sub> FLUID END**



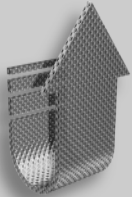
**THE SIMPLE UN<sub>x</sub>**

- 62% fewer parts than the 10150
- One piece of brass
- One packing ring
- One valve
- No fluid cylinder to crack
- Cuts your pump's downtime and repair costs
- No special tools needed
- Utilizes cartridge-style overhaul
- In-line valve design



| ITEM | QTY | JETSTREAM IMPROVED™ PART NO. | DESCRIPTION                              |
|------|-----|------------------------------|--|
| 1    | 1   | 26178                        | POWER FRAME                              |
| 2    | 1   | 25532                        | CRANKSHAFT                               |
| 3    | 2   | 25541                        | BEARING, CRANKSHAFT MAIN                 |
| 4    | 3   | 50984                        | CONNECTING ROD ASSEMBLY (consisting of:) |
| 5    | 3   | 51131                        | CONNECTING ROD                           |
| 6    | 6   | 25770                        | BOLT, CONNECTING ROD                     |
| 7    | 3   | 25537                        | BEARING, CROSSHEAD PIN                   |
| 8    | 3   | 25542                        | BEARING, CONNECTING ROD, STANDARD SIZE   |
| 9    | 3   | 50446                        | CROSSHEAD ASSEMBLY (consisting of:)      |
| 10   | 3   | 50035                        | CROSSHEAD                                |
| 11   | 3   | 50443                        | STUB, CROSSHEAD                          |
| 12   | 3   | 25545                        | PIN, DOWEL                               |
| 13   | 6   | 25132                        | SETSCREW                                 |
| 14   | 3   | 50929                        | PIN, CROSSHEAD                           |
| 15   | 3   | 26183                        | DEFLECTOR, CROSSHEAD STUB                |
| 16   | 3   | 25549                        | CAP, CROSSHEAD STUB SEAL                 |

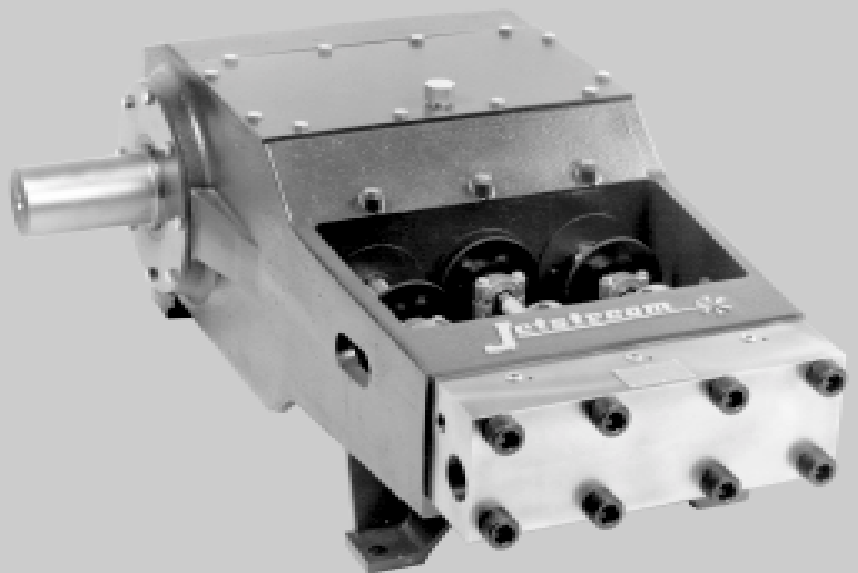
| ITEM | QTY | JETSTREAM<br>IMPROVED™<br>PART NO.     | DESCRIPTION   |
|------|-----|--|---|
| 17   | 3   | 25546                                  | GASKET, CROSSHEAD STUB SEAL CAP   |
| 18   | 6   | 25536                                  | SEAL, CROSSHEAD STUB  |
| 19   | 18  | COMM                                   | BOLT  |
| 20   | 1   | 25556                                  | CAP, FRAME, OUTBOARD  |
| 21   | A/R | 25558<br>25558-1<br>25558-2<br>25558-3 | SHIM, .020" THICK<br>SHIM, .010" THICK<br>SHIM, .0075" THICK<br>SHIM, .005" THICK |
| 22   | 1   | 25554                                  | CAP, FRAME, INBOARD   |
| 23   | 1   | 25553                                  | SEAL, CRANKSHAFT OIL  |
| 24   | 1   | 25547                                  | COVER, CRANKCASE  |
| 25   | 1   | 25550                                  | GASKET, CRANKCASE COVER   |
| 26   | 14  | COMM                                   | BOLT  |
| 27   | 1   | 25746                                  | BREATHER, CRANKCASE   |
| 28   | 1   | 26221                                  | GAUGE, OIL LEVEL  |

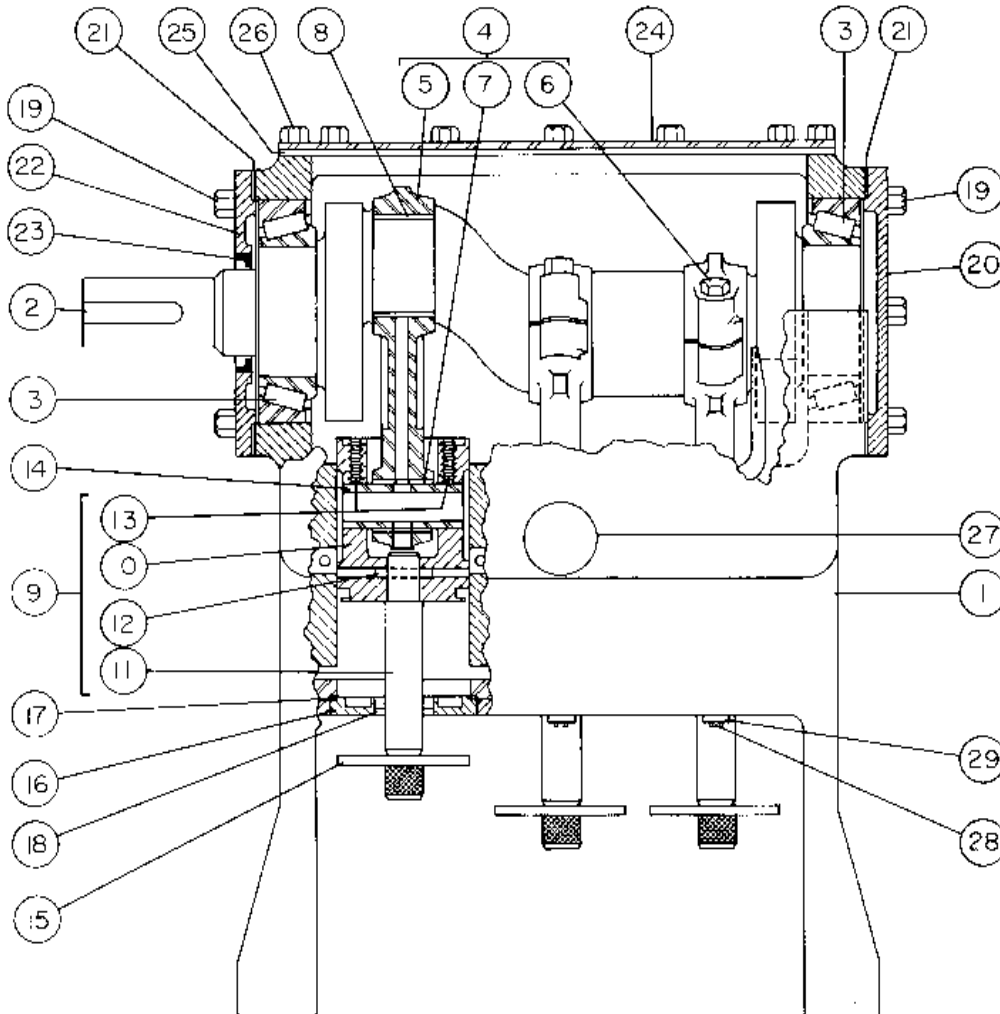


If your 1012 requires major repair, or to achieve pressures up to 40,000 psi  
**UPGRADE TO JETSTREAM'S 3000 SERIES BARESHAFT PUMP**

**BENEFIT FROM ITS HIGHER  
HORSEPOWER RATING AND STATE-  
OF-THE-ART UN<sub>x</sub> FLUID END.**

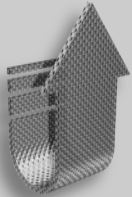
- 125 Horsepower rated
- UN<sub>x</sub> Fluid End with cartridge-style repair will reduce pump downtime
- Larger journal bearings
- Stronger Ductile Iron power frame
- Heavy-duty forged crankshaft





| ITEM | QTY | JETSTREAM IMPROVED™ PART NO. | DESCRIPTION                              |
|------|-----|------------------------------|--|
| 1    | 1   | 26193                        | POWER FRAME                              |
| 2    | 1   | 26179                        | CRANKSHAFT                               |
| 3    | 2   | 26202                        | BEARING, CRANKSHAFT MAIN                 |
| 4    | 3   | 26197                        | CONNECTING ROD ASSEMBLY (consisting of:) |
| 5    | 3   | 26200                        | CONNECTING ROD                           |
| 6    | 6   | 26186                        | BOLT, CONNECTING ROD                     |
| 6A   | 6   | 26207                        | SHIM, CONNECTING ROD                     |
| 7    | 3   | 26192                        | BEARING, CROSSHEAD PIN                   |
| 8    | 3   | 26227                        | BEARING, CONNECTING ROD                  |
| 9    | 3   | 26198                        | CROSSHEAD ASSEMBLY (consisting of:)      |
| 10   | 3   | 26210                        | CROSSHEAD                                |
| 11   | 3   | 51129                        | STUB, CROSSHEAD                          |
| 12   | 3   | 25545                        | PIN, DOWEL                               |
| 13   | 12  | 26194                        | SETScrew                                 |
| 14   | 3   | 26191                        | PIN, CROSSHEAD                           |
| 15   | 3   | 26216                        | DEFLECTOR, CROSSHEAD STUB                |

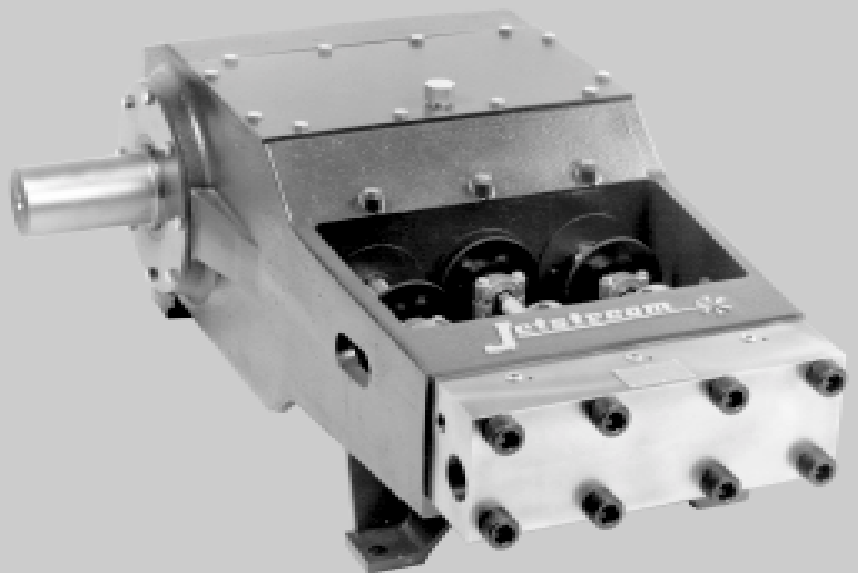
| ITEM | QTY | JETSTREAM<br>IMPROVED™<br>PART NO. | DESCRIPTION                     |
|------|-----|------------------------------------|---------------------------------|
| 16   | 3   | 51465                              | CAP, CROSSHEAD STUB             |
| 17   | 3   | 26189                              | O-RING, CROSSHEAD STUB SEAL CAP |
| 18   | 9   | 26199                              | SEAL, CROSSHEAD STUB            |
| 19   | 19  | COMM                               | CAPSCREW                        |
| 20   | 1   | 26188                              | CAP, FRAME, OUTBOARD            |
| 21   | A/R | 26203                              | SHIM SET, FRAME CAP             |
| 22   | 1   | 26184                              | CAP, FRAME, INBOARD             |
| 23   | 1   | 26201                              | SEAL, CRANKSHAFT OIL            |
| 24   | 1   | 26185                              | COVER, CRANKCASE                |
| 25   | 1   | 26190                              | GASKET, CRANKCASE COVER         |
| 26   | 12  | COMM                               | CAPSCREW                        |
| 27   | 1   | 26187                              | BREATHER, CRANKCASE             |
| 28   | 3   | 26437                              | CAPSCREW                        |
| 29   | 3   | COMM                               | ARM, CROSSHEAD SEAL CAP LOCK    |

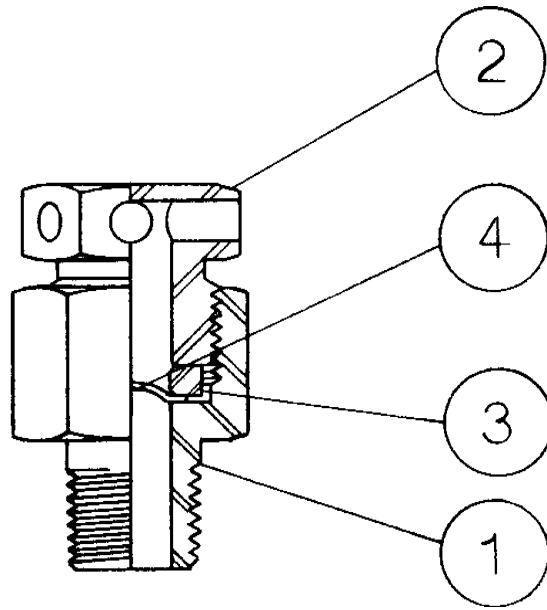


If your 10150, 10200 or 20150 requires major repair, or to achieve pressures up to 40,000 psi  
**UPGRADE TO JETSTREAM'S 4200 SERIES BARESHAFT PUMP**

**BENEFIT FROM ITS HIGHER HORSEPOWER RATING AND STATE-OF-THE-ART UN<sub>x</sub> FLUID END.**

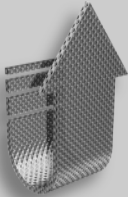
- 300 Horsepower rated
- UN<sub>x</sub> Fluid End with cartridge-style repair will reduce pump downtime
- Larger journal bearings
- Stronger Ductile Iron power frame
- Heavy-duty forged crankshaft



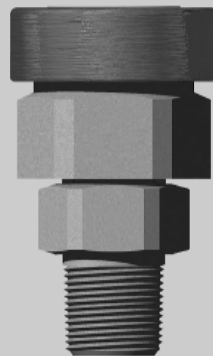


| ITEM | QTY | JETSTREAM IMPROVED™ PART NO. | DESCRIPTION            |
|------|-----|------------------------------|------------------------|
| 1    | 1   | 51322                        | BODY                   |
| 2    | 1   | 51325                        | CAP                    |
| 3    | 1   | 51329                        | RING, HOLD DOWN        |
| 4    | 1   | 51353                        | DISC, 6,000 PSI BURST  |
|      |     | 51354                        | DISC, 8,000 PSI BURST  |
|      |     | 51355                        | DISC, 10,000 PSI BURST |
|      |     | 51356                        | DISC, 12,000 PSI BURST |
|      |     | 51357                        | DISC, 14,000 PSI BURST |
|      |     | 51358                        | DISC, 16,000 PSI BURST |

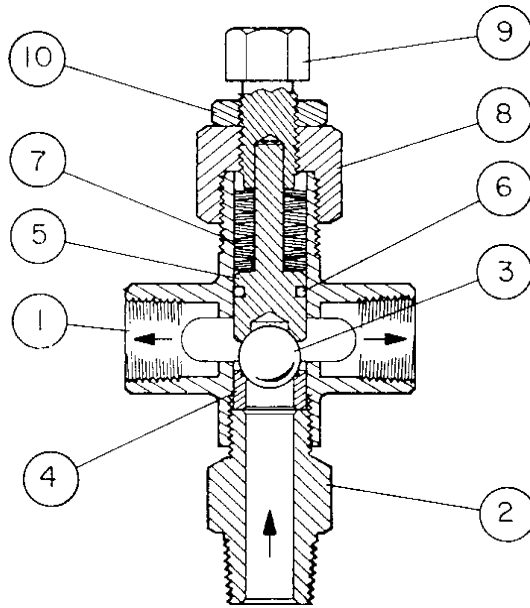
**UPGRADE TO JETSTREAM'S RUPTURE DISC ASSEMBLY**



Replacing your NSP-2000 Pop-Off Valve with a Jetstream Rupture Disc Assembly will give you additional safety and will save you money with lower replacement disc costs.

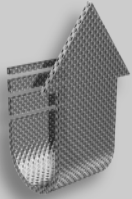


- Coin-proof seat prevents dangerous use of coin instead of proper disc
- Lower replacement disc costs
- Working pressures up to 20,000 psi



| ITEM | QTY | 1" NPT<br>6,000 PSI -<br>10,000 PSI | 1" NPT<br>10,000 PSI -<br>16,000 PSI | 2" NPT<br>8,000 PSI -<br>10,000 PSI | DESCRIPTION                                      |
|------|-----|-------------------------------------|--------------------------------------|-------------------------------------|--|
| 1    | 1   | 25405                               | 25405                                | 26342                               | BODY   |
| 2    | 1   | 25398                               | 26345                                | 26326                               | FRAME, SEAT                                      |
| 3*   | 1   | —                                   | —                                    | —                                   | BALL (only available with kit below)             |
| 4*   | 1   | —                                   | —                                    | —                                   | SEAT (only available with kit below)             |
| 5    | 1   | 25403                               | 26328                                | 26338                               | PLUNGER  |
| 6*   | 1   | 26041                               | 26041                                | 26331                               | O-RING, PLUNGER                                  |
| 7    | 1   | 25399                               | 26341                                | 26334                               | SPRING SET                                       |
| 8    | 1   | 25393                               | 25393                                | 26330                               | CAP  |
| 9    | 1   | 25397                               | 25397                                | 26337                               | ADJUSTING SCREW                                  |
| 10   | 1   | 25396                               | 25396                                | 26333                               | LOCKNUT  |
|      | 1   | N/A                                 | 26335                                | N/A                                 | O-RING, SEAT FRAME (not shown)                   |
| *    |     | 50337                               | 51376                                | 51359                               | BALL AND SEAT KIT (includes all "*" items above) |

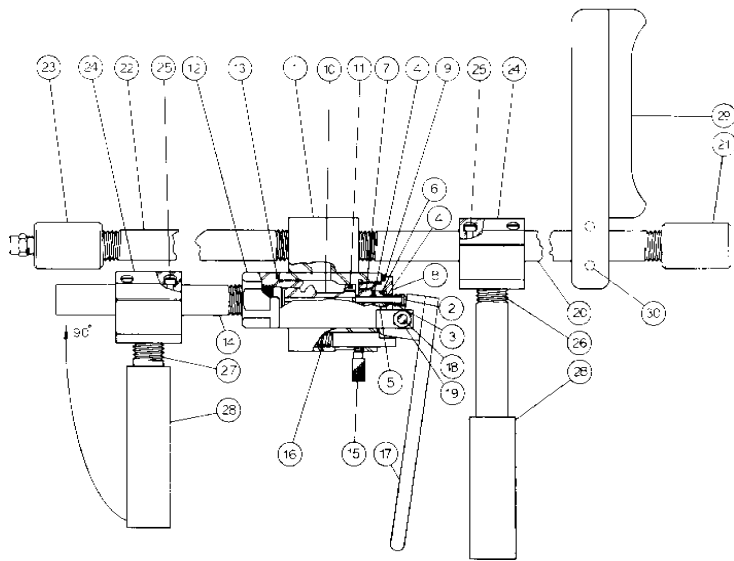
**UPGRADE TO JETSTREAM'S SEVERE SERVICE RELIEF VALVE**



Upgrade to a Jetstream Severe Service Relief Valve for longer service life, fewer parts and simple cartridge-style repair.



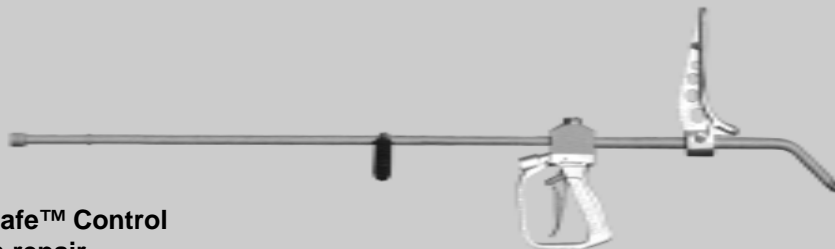
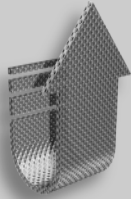
- Only 7 parts
- Tougher ball / seat materials. Tungsten carbide available
- Quick and easy cartridge-style field repair
- Working pressures up to 20,000 psi



| ITEM | QTY | JETSTREAM IMPROVED™ PART NO. | DESCRIPTION                | ITEM | QTY | JETSTREAM IMPROVED™ PART NO. | DESCRIPTION             |
|------|-----|------------------------------|----------------------------|------|-----|------------------------------|-------------------------|
| 1    | 1   | 51346                        | BODY (for NCG-200)         | 14   | 1   | 51348                        | PIPE, DUMP PORT         |
|      | 1   | 51368                        | BODY (for NCG-250)         | 15   | 1   | 51347                        | LOCK, SAFETY            |
| 2    | 1   | 51305                        | PIN, BLEED PORT            | 16   | 1   | 26322                        | SPRING, SAFETY LOCK     |
| 3    | 1   | 25179                        | SPRING, BLEED PIN          | 17   | 1   | 51327                        | HANDLE, PISTOL          |
| 4    | 2*  | 25178                        | O-RING, POLY               | 18   | 1   | 25313                        | CAPSCREW                |
| 5    | 1   | 51319                        | SLEEVE, PACKING            | 19   | 1   | 25314                        | NUT, LOCKING            |
| 6    | 1*  | 26260                        | O-RING, POLY               | 20   | 1   | COMM                         | NIPPLE, INLET           |
| 7    | 1   | 51330                        | NUT, O-RING PKG, SLEEVE    | 21   | 1   | 26056                        | COUPLING                |
| 8    | 1   | 51289                        | NUT, PACKING HOLDER        | 22   | 1   | 50065                        | NIPPLE, DISCHARGE       |
| 9    | 1*  | 26264                        | O-RING, POLY               | 23   | 1   | COMM                         | COUPLING                |
| 10   | 1   | 51323                        | SPOOL (for NCG-200)        | 24   | 2   | 51332                        | ATTACHMENT              |
|      | 1   | 51275                        | SPOOL (for NCG-250)        | 25   | 8   | 26327                        | CAPSCREW                |
| 11   | 1*  | 25110                        | O-RING, POLY (for NCG-200) | 26   | 1   | 51360                        | PIPE, MAIN HANDLE       |
|      | 1*  | 26258                        | O-RING, POLY (for NCG-250) | 27   | 1   | 51335                        | PIPE, SIDE HANDLE       |
| 12   | 1   | 51321                        | SEAT (for NCG-200)         | 28   | 2   | 26319                        | GRIP                    |
|      | 1   | 51274                        | SEAT (for NCG-250)         | 29   | 1   | 51350                        | SHOULDER PIECE ASSEMBLY |
| 13   | 1*  | 26264                        | O-RING, POLY (for NCG-200) | 30   | 2   | 26126                        | CAPSCREW                |
|      | 1*  | 26215                        | O-RING, POLY (for NCG-250) |      |     |                              |                         |

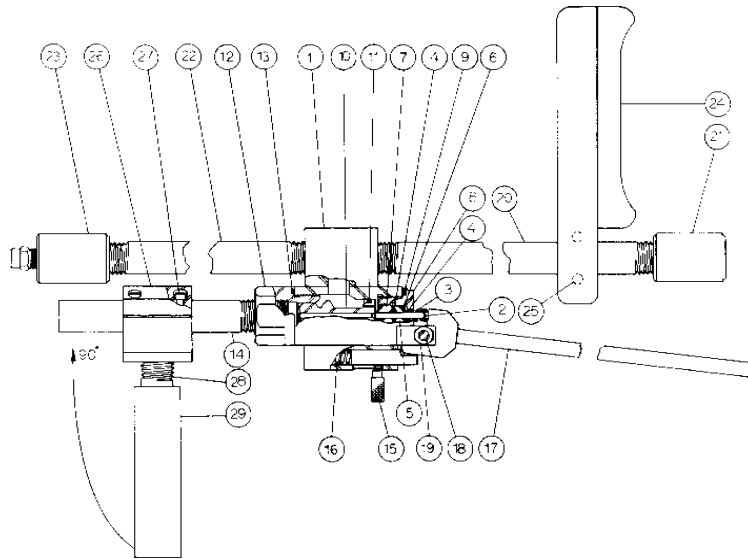
\* ORDER AS SEAL KIT P/N 51304 FOR NCG-200; SEAL KIT P/N 51242 FOR NCG-250

**UPGRADE TO JETSTREAM'S DURASAFE™ PISTOL STYLE CONTROL GUN**



Upgrading to a Jetstream DuraSafe™ Control Gun will drastically cut your gun repair downtime and will provide your operator with superior comfort and safety. The DuraSafe™ Series is the waterblast industry's most popular control gun!

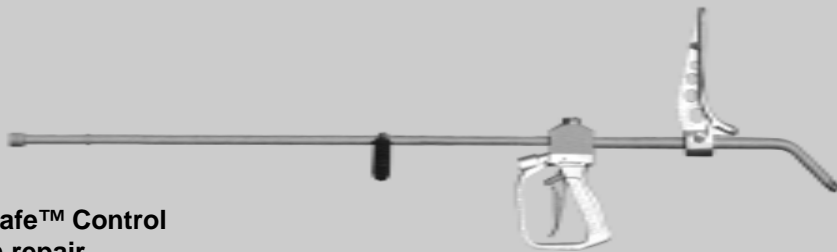
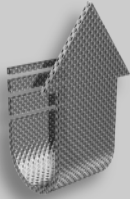
- Fully adjustable, comfortable body pad
- Improved, advanced safety features
- 30 second cartridge-style field repair
- 15,000 and 20,000 psi models
- Uses same cartridge as DuraSafe™ Foot Control Gun



| ITEM | QTY | JETSTREAM IMPROVED™ PART NO. | DESCRIPTION                | ITEM | QTY | JETSTREAM IMPROVED™ PART NO. | DESCRIPTION             |
|------|-----|------------------------------|----------------------------|------|-----|------------------------------|-------------------------|
| 1    | 1   | 51346                        | BODY (for NCG-200)         | 14   | 1   | 51348                        | PIPE, DUMP PORT         |
|      | 1   | 51368                        | BODY (for NCG-250)         | 15   | 1   | 51347                        | LOCK, SAFETY            |
| 2    | 1   | 51305                        | PIN, BLEED PORT            | 16   | 1   | 26322                        | SPRING, SAFETY LOCK     |
| 3    | 1   | 25179                        | SPRING, BLEED PIN          | 17   | 1   | 51369                        | HANDLE, LEVER           |
| 4    | 2*  | 25178                        | O-RING, POLY               | 18   | 1   | 25313                        | CAPSCREW                |
| 5    | 1   | 51319                        | SLEEVE, PACKING            | 19   | 1   | 25314                        | NUT, LOCKING            |
| 6    | 1*  | 26260                        | O-RING, POLY               | 20   | 1   | 50739                        | NIPPLE, INLET           |
| 7    | 1   | 51330                        | NUT, O-RING PKG, SLEEVE    | 21   | 1   | 26056                        | COUPLING                |
| 8    | 1   | 51289                        | NUT, PACKING HOLDER        | 22   | 1   | 50065                        | NIPPLE, DISCHARGE       |
| 9    | 1*  | 26264                        | O-RING, POLY               | 23   | 1   | 50342                        | COUPLING                |
| 10   | 1   | 51323                        | SPOOL (for NCG-200)        | 24   | 1   | 51350                        | SHOULDER PIECE ASSEMBLY |
|      | 1   | 51275                        | SPOOL (for NCG-250)        | 25   | 2   | 26126                        | CAPSCREW                |
| 11   | 1*  | 525110                       | O-RING, POLY (for NCG-200) | 26   | 1   | 51332                        | ATTACHMENT              |
|      | 1*  | 26258                        | O-RING, POLY (for NCG-250) | 27   | 4   | 26327                        | CAPSCREW                |
| 12   | 1   | 51321                        | SEAT (for NCG-200)         | 28   | 1   | 51335                        | PIPE, SIDE HANDLE       |
|      | 1   | 51274                        | SEAT (for NCG-250)         | 29   | 1   | 26319                        | GRIP                    |
| 13   | 1   | 26264                        | O-RING, POLY (for NCG-200) |      |     |                              |                         |
|      | 1   | 26215                        | O-RING, POLY (for NCG-250) |      |     |                              |                         |

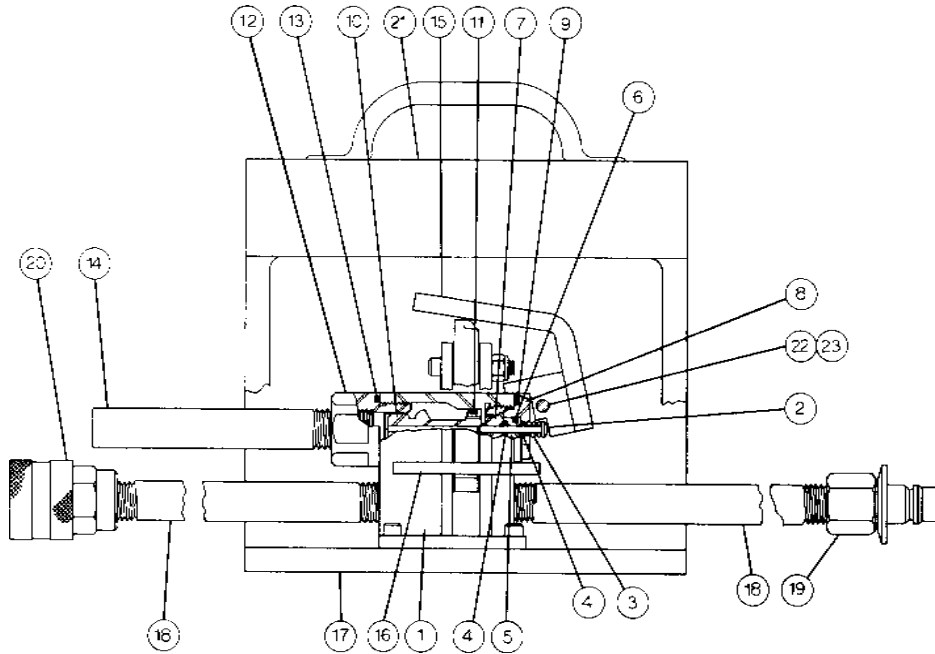
\* ORDER AS SEAL KIT P/N 51304 FOR NCG-200; SEAL KIT P/N 51242 FOR NCG-250

**UPGRADE TO JETSTREAM'S DURASAFE™ PISTOL STYLE CONTROL GUN**



Upgrading to a Jetstream DuraSafe™ Control Gun will drastically cut your gun repair downtime and will provide your operator with superior comfort and safety. The DuraSafe™ Series is the waterblast industry's most popular control gun!

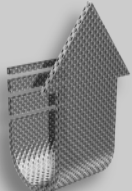
- Fully adjustable, comfortable body pad
- Improved, advanced safety features
- 30 second cartridge-style field repair
- 15,000 and 20,000 psi models
- Uses same cartridge as DuraSafe™ Foot Control Gun



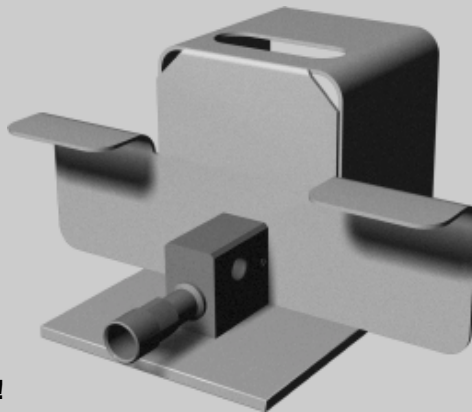
| ITEM | QTY | JETSTREAM IMPROVED™ PART NO. | DESCRIPTION               | ITEM | QTY | JETSTREAM IMPROVED™ PART NO. | DESCRIPTION                |
|------|-----|------------------------------|---------------------------|------|-----|------------------------------|----------------------------|
| 1    | 1   | 51349                        | BODY (for FC-200)         | 12   | 1   | 51321                        | SEAT (for FC-200)          |
|      | 1   | 51373                        | BODY (for FC-250)         |      | 1   | 51274                        | SEAT (for FC-250)          |
| 2    | 1   | 51305                        | PIN, BLEED PORT           | 13   | 1*  | 26264                        | O-RING, POLY (for FC-200)  |
| 3    | 1   | 25179                        | SPRING, BLEED PIN         |      | 1*  | 26215                        | O-RING, POLY (for FC-250)  |
| 4    | 2*  | 25178                        | O-RING, POLY              | 14   | 1   | 51348                        | PIPE, DUMP PORT            |
| 5    | 1   | 51319                        | SLEEVE, PACKING           | 15   | 1   | 51362                        | ARM, OPERATING             |
| 6    | 1*  | 26260                        | O-RING, POLY              | 16   | 1   | 51367                        | PEDAL, FOOT                |
| 7    | 1   | 51330                        | NUT, O-RING PKG, SLEEVE   | 17   | 1   | 51351                        | BASE                       |
| 8    | 1   | 51289                        | NUT, PACKING HOLDER       | 18   | 1   | COMM                         | NIPPLE, INLET & OUTLET     |
| 9    | 1*  | 26264                        | O-RING, POLY              | 19   | 1   | 26175                        | COUPLING HALF, Q.D. MALE   |
| 10   | 1   | 51323                        | SPOOL (for FC-200)        | 20   | 1   | 26176                        | COUPLING HALF, Q.D. FEMALE |
|      | 1   | 51275                        | SPOOL (for FC-250)        | 21   | 1   | 51365                        | COVER                      |
| 11   | 1*  | 25110                        | O-RING, POLY (for FC-200) | 22   | 1   | 25313                        | CAPSCREW                   |
|      | 1*  | 26258                        | O-RING, POLY (for FC-250) | 23   | 1   | 25314                        | NUT, LOCKING               |

\* ORDER AS SEAL KIT P/N 51304 FOR FC-200; SEAL KIT P/N 51242 FOR FC-250

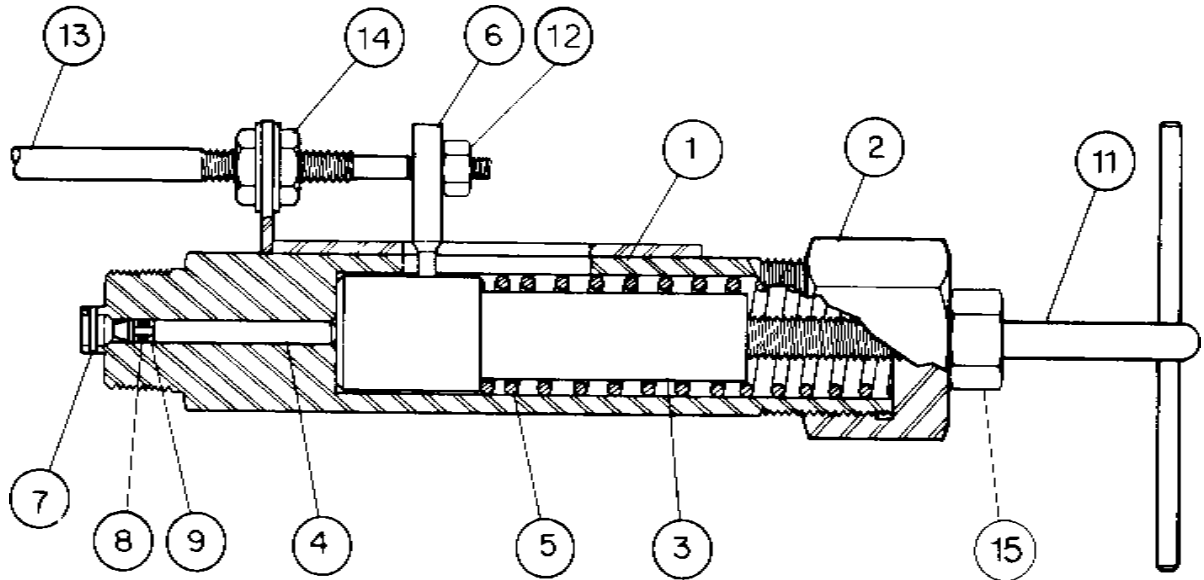
**UPGRADE TO JETSTREAM'S DURASAFE™ FOOT STYLE CONTROL GUN**



Upgrading to a Jetstream DuraSafe™ Foot Style Control Gun will drastically cut your repair downtime and will provide you with superior reliability and safety. The DuraSafe™ Series is the waterblast industry's most popular control gun!



- Special Foot / Hose Guard for added protection
- Improved, advanced safety features
- 30 second cartridge-style field repair
- 15,000 and 20,000 psi models
- Uses same cartridge as DuraSafe™ Pistol Control Gun



| ITEM | QTY | JETSTREAM IMPROVED™ PART NO. | DESCRIPTION                              |
|------|-----|------------------------------|--|
| 1    | 1   | COMM                         | BODY                                     |
| 2    | 1   | 51366                        | NUT, BODY                                |
| 3    | 1   | 50195                        | RETAINER, SPRING                         |
| 4    | 1   | 50191                        | PISTON                                   |
| 5    | 1   | 26346                        | SPRING                                   |
| 6    | 1   | 50176                        | ACTUATOR                                 |
| 7    | 1   | 26078                        | PIN                                      |
| 8    | 1   | 26323                        | O-RING, POLY                             |
| 9    | 2   | 25278                        | RING, BACKUP                             |
| 11   | 1   | 51364                        | HANDLE                                   |
| 12   | 1   | 26321                        | NUT, JAM                                 |
| 13   | 1   | 50197                        | CABLE, THROTTLE CONTROL (specify length) |
| 14   | 2   | 26269                        | NUT, JAM                                 |
| 15   | 1   | 25289                        | NUT                                      |

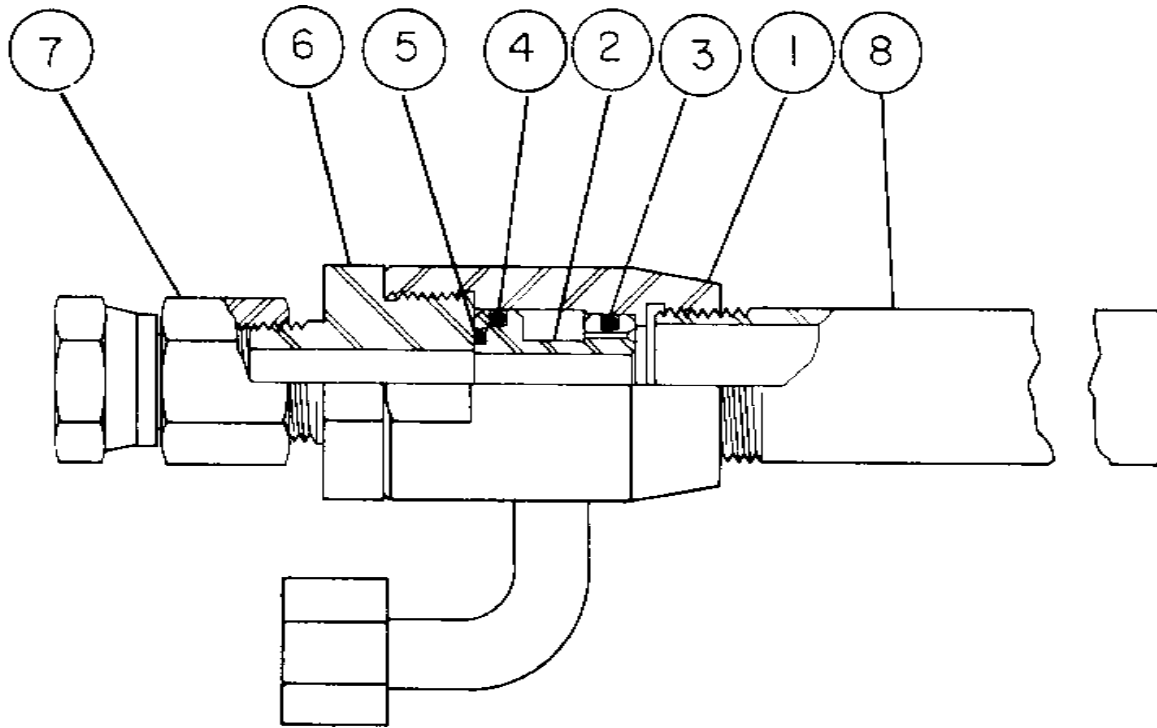


### UPGRADE TO JETSTREAM'S HYDRO THROTTLE



- 3 minute cartridge-style field repair
- Fast down-throttle adjustment for greater safety
- No difficult adjustments

- Requires only light hand force to set engine speed
- 15,000 and 20,000 psi models



| ITEM | QTY | JETSTREAM IMPROVED™ PART NO. | DESCRIPTION                                |
|------|-----|------------------------------|--|
| 1    | 1   | 51352                        | BODY                                       |
| 2    | 1   | 51320                        | SPOOL, VENTURI (specify pressure and flow) |
| 3    | 1   | 26332                        | O-RING, POLY                               |
| 4    | 1   | 26343                        | O-RING, POLY                               |
| 5    | 1   | 26325                        | O-RING, POLY                               |
| 6    | 1   | 51375                        | INLET, SAND                                |
| 7    | 1   | 26320                        | ADAPTER, UNION, 3/4" NPT INLET             |
| 8    | 1   | 51363                        | PIPE, NOZZLE                               |



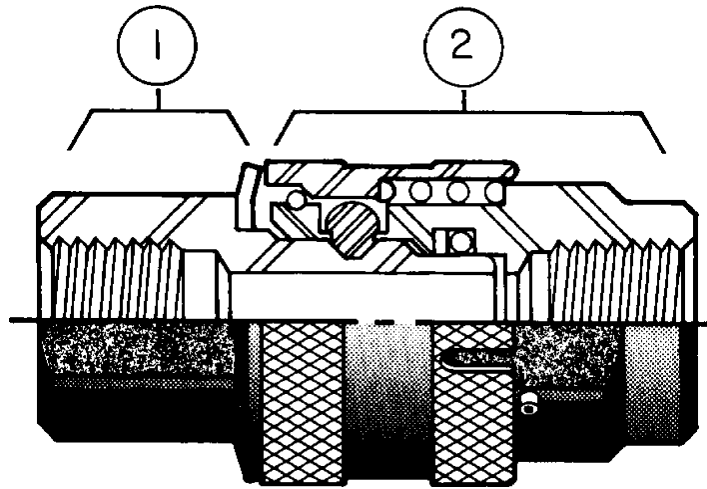
**Replacing your NLB Abrasive Induction Nozzle with a Jetstream Abrasive Nozzle Injector will increase your production and lower your downtime.**

**UPGRADE TO JETSTREAM'S ABRASIVE NOZZLE**



JETSTREAM  
HOUSTON  
15,000 PSI MAX

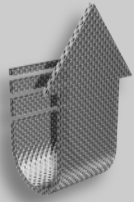
- Smaller and lighter than NLB's Abrasive Injector
- Integral water shut-off
- Long-life boron carbide nozzle
- 15,000 psi rated



| ITEM | QTY | 3/8" NPT<br>PART NO. | 1/2" NPT<br>PART NO. | DESCRIPTION |
|------|-----|----------------------|----------------------|-------------|
| 1*   | 1   | 26181                | 26175                | MALE HALF   |
| 2*   | 1   | 26182                | 26176                | FEMALE HALF |

\* COMPLETE COUPLING ASSEMBLY, 3/8" NPT, P/N 50906;  
 \* COMPLETE COUPLING ASSEMBLY, 1/2" NPT, P/N 50557

**UPGRADE TO JETSTREAM'S TWISLOK™ COUPLING**

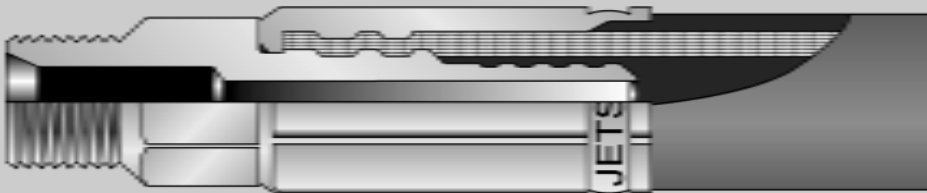


Switch to the toughest quick-connect hose coupling on the market.



- Acme threads withstand the roughest field treatment
- Heavy-duty cartridge-style seal
- Seal surface protected when disconnected
- 3/8", 1/2" 3/4" and 1" NPT
- 15,000 psi rated
- Stainless steel

**JETSTREAM NO-BLO™ (RUBBER) WATERBLAST HOSE**



Do not risk serious operator injury from an end fitting blowing off. Use Jetstream NO-BLO™ waterblast hose.

- NO-BLO™ end fittings that will not blow off, for maximum safety
- Operating pressures to 20,000 psi with burst pressures to 50,000 psi
- Sizes 1/4" to 1" I.D.





# JETSTREAM MANUFACTURES A COMPLETE LINE OF REPLACEMENT PARTS FOR ALL PUMPS

Jetstream understands how critical time is in the waterblast industry. Because of this, Jetstream ships 98% of all orders the same day received. Our Application Specialists and Shipping Personnel are knowledgeable and know the fastest, most cost-effective way to get the products to the customer when they need them.



## JETSTREAM'S AROUND-THE-CLOCK MANUFACTURING FACILITY.

Jetstream is a major manufacturer of waterblast systems, pumps, accessories and replacement parts.

Jetstream has been manufacturing waterblast products for over 20 years and has earned a reputation of producing quality products. All parts are machined on CNC (Computer Numerical Controlled) machines resulting in superior accuracy — every single time. Our shop runs 24 hours around-the-clock to ensure stock on parts when our customers need them.

Jetstream's engineers review parts designs and make improvements to materials and tolerances to give you the best product possible. All products are evaluated at our test facility to ensure they meet Jetstream's high, stringent standards.



## SERVICE SECOND TO NONE

Service means helping the customer find the right products for the job, making sure they have everything they need and getting products to them when they need them.

Jetstream's trained Application Specialists are here to help the customer find solutions, not to just sell products. Whether they need help troubleshooting a pump problem or deciding on the right cleaning equipment for that upcoming job, our Application Specialists are here to serve.

Jetstream manufactures and stocks all parts in-house, giving us total control over inventory. Jetstream also ships 98% of orders out the very same day they are received — so **every waterblast part and accessory is available when you need it!**

Jetstream of Houston, Inc.  
4930 Cranswick  
Houston, TX 77041

PO Box 79228  
Houston, TX 77279

Jetstream of Houston, Inc.  
FAX: 713-462-5387

Visit our web site at:  
web: [www.waterblast.com](http://www.waterblast.com)  
eMail: [sales@waterblast.com](mailto:sales@waterblast.com)

Jetstream of Houston welcomes the  
American Express® Card,  
VISA® and MasterCard®



Cards



**1-800-231-8192 • (713) 462-7000**