



PARTS MANUAL



BUTTERWORTH / PARTEK WATERBLAST UNITS

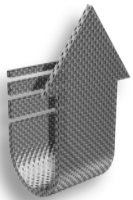
The **Jetstream Improved™** repair parts in this manual are superior **direct replacements** for your worn Butterworth/Partek parts. These parts are manufactured in our modern, in-house, computer controlled machining facility.

We offer **Same-Day Shipment** for any part you need from our well stocked warehouse . . .

Jetstream Extended Sales Hours

M - F - **7:00 am - 6:00 pm** (C.S.T.)

Saturday - **9:00 am - 12:00 pm** (C.S.T.)



A **Jetstream Upgrade™** can be substituted for any Butterworth/Partek component that is costly to repair or has become a maintenance problem.

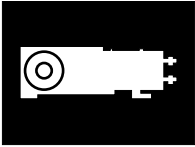
The **Jetstream Upgrade™** shown opposite each Butterworth/Partek component in this manual generally has **fewer parts** and **cartridge-style** repair features. It will give your equipment **better-than new performance** with less maintenance downtime and operating costs.



CONTENTS



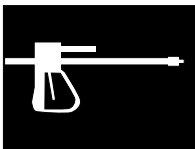
Fluid Ends Page 4



Power Ends Page 14



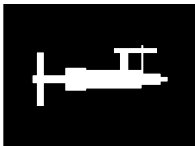
Safety Pressure Head and Relief Valve Page 20



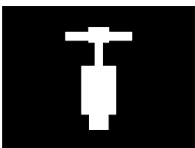
Control Guns Page 22



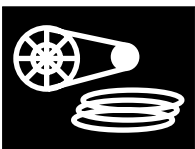
Adjustable Constant Pressure Valve (ACPV)..... Page 24



Throttle Control Page 25

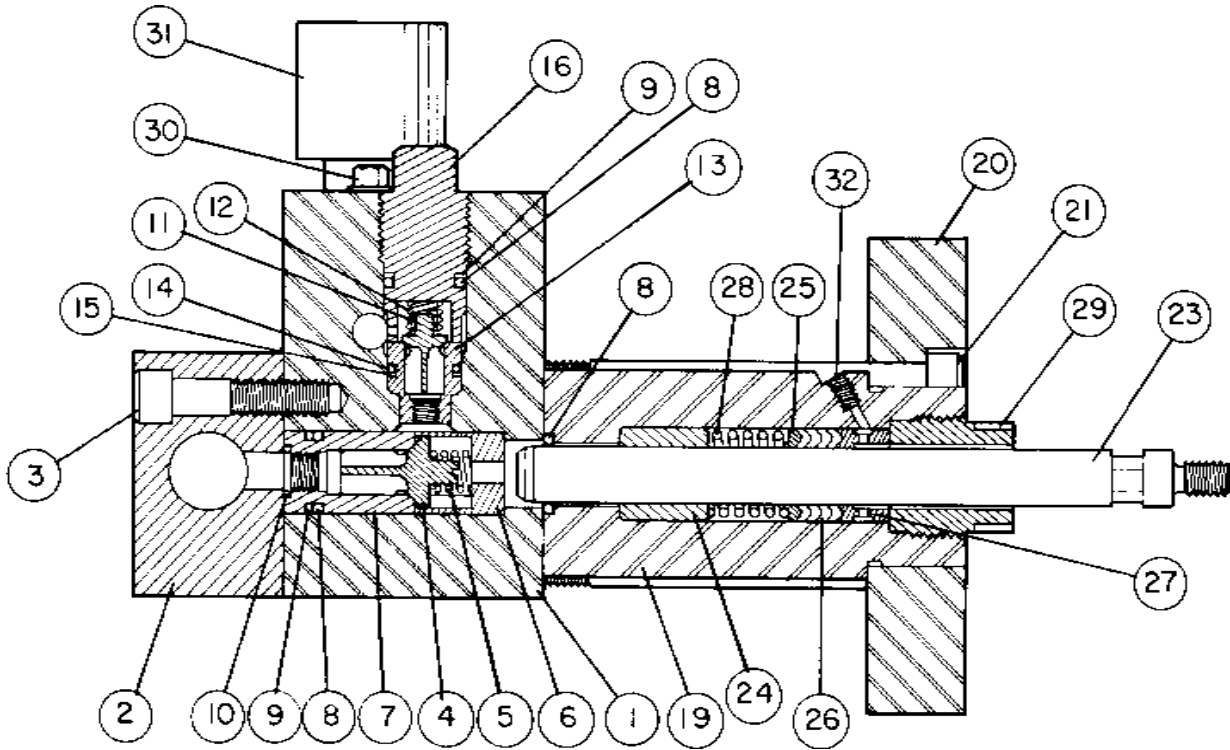


Flow Control Valves Page 26



Pump Drives Page 28
Abrasive Injector Page 29
Quick-Connect Couplings and Hose Page 30

800-231-8192 • 713-462-7000



ITEM	QTY	JETSTREAM IMPROVED™ PART NO.	DESCRIPTION
1	1	50201	FLUID CYLINDER
2	1	50182	MANIFOLD, SUCTION
3	12	25286	CAPSCREW
4	3	50028	VALVE, SUCTION
5	3	25506	SPRING, SUCTION VALVE
6	3	50186	GUIDE, SUCTION VALVE
7	3	50184	SEAT, SUCTION VALVE
8	9	25287	O-RING
9	6	25288	RING, BACKUP
10	3	25312	O-RING
11	3	50188	VALVE, DISCHARGE
12	3	25303	SPRING, DISCHARGE VALVE
13	3	50194	SEAT, DISCHARGE VALVE
14	3	25717	O-RING
15	3	25291	RING, BACKUP
16	3	50196	COVER, DISCHARGE VALVE
19	3	50198	STUFFING BOX
20	1	50202	PLATE, FLUID END ADAPTING
21	12	25290	CAPSCREW
23	3	51240	PLUNGER, 5/8" DIA., THREADED
		51605	PLUNGER, 5/8" DIA., COLLET
		50527	PLUNGER, 3/4" DIA., THREADED
		51423	PLUNGER, 3/4" DIA., COLLET
		50526	PLUNGER, 7/8" DIA., THREADED
		51426	PLUNGER, 7/8" DIA., COLLET
		50095	PLUNGER, 20 mm DIA., THREADED
		50865	PLUNGER, 20 mm DIA., COLLET
		50096	PLUNGER, 24 mm DIA., THREADED
		51344	PLUNGER, 24 mm DIA., COLLET
		50676	PLUNGER, 1" DIA., THREADED
		51404	PLUNGER, 1" DIA., COLLET

ITEM	QTY	JETSTREAM IMPROVED™ PART NO.	DESCRIPTION
24	3	51236 50207 51328 50204 50205 50206	THROAT BUSHING, 5/8" THROAT BUSHING, 3/4" THROAT BUSHING, 7/8" THROAT BUSHING, 20 mm THROAT BUSHING, 24 mm THROAT BUSHING, 1"
25	3	51228 50089 50090 50092 50093 50091	RING, FRONT PACKING, 5/8" RING, FRONT PACKING, 3/4" RING, FRONT PACKING, 7/8" RING, FRONT PACKING, 20 mm RING, FRONT PACKING, 24 mm RING, FRONT PACKING, 1"
26	3	51230 50081 50037 50036 50038 50039	PACKING SET, 5/8" PACKING SET, 3/4" PACKING SET, 7/8" PACKING SET, 20 mm PACKING SET, 24 mm PACKING SET, 1"
27	3	51238 50211 51326 50208 50209 50210	RING, BACK PACKING, 5/8" RING, BACK PACKING, 3/4" RING, BACK PACKING, 7/8" RING, BACK PACKING, 20 mm RING, BACK PACKING, 24 mm RING, BACK PACKING, 1"
28	3	25218	SPRING, PACKING
29	3	50190	GLAND NUT
30	3	25174	PLUG
31	1	50122 50125	SAFETY HEAD ASSEMBLY (see page 20 for replacement Rupture Discs) SAFETY HEAD ASSEMBLY (see page 20 for replacement Rupture Discs)
		50220 50217	TOOLS (not shown) WRENCH, GLAND NUT TOOL, VALVE SEAT REMOVAL

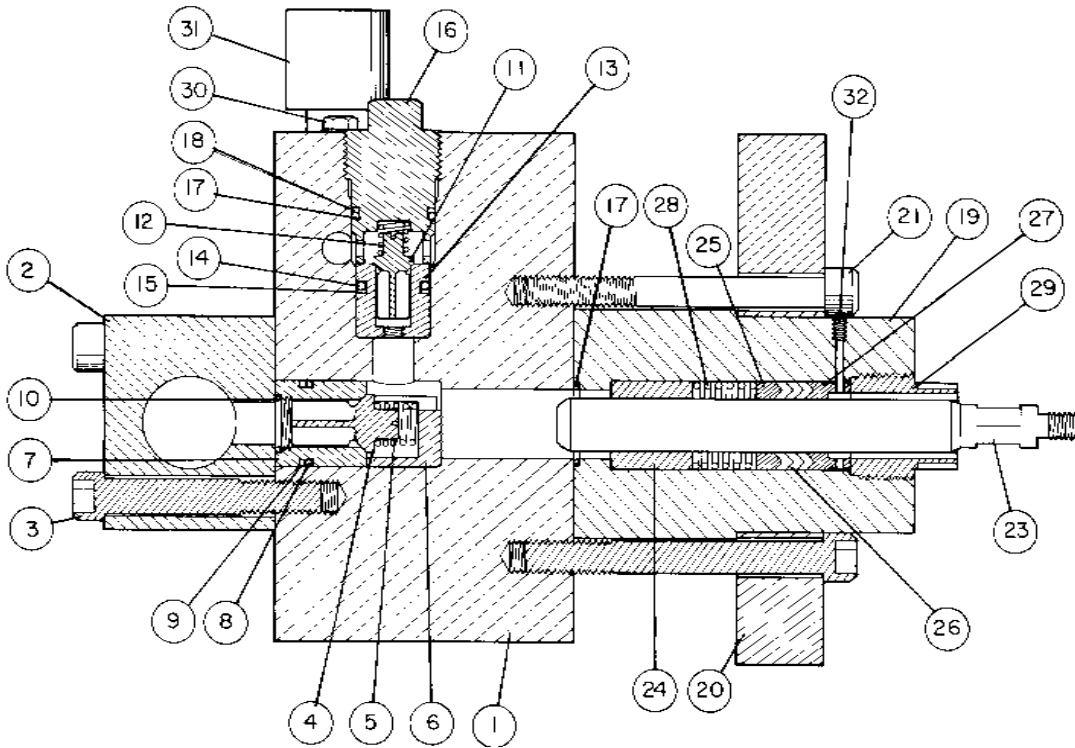


**If your L-300 (L-74) requires major repair, or to achieve pressures up to 40,000 psi
UPGRADE TO JETSTREAM'S UN_x FLUID END**



THE SIMPLE UN_x

- 61% fewer parts than the L-300 (L-74)
- One piece of brass
- One packing ring
- One valve
- No fluid cylinder to crack
- Cuts your pump's downtime and repair costs
- No special tools needed
- Utilizes cartridge-style overhaul
- In-line valve design



ITEM	QTY	JETSTREAM IMPROVED™ PART NO.	DESCRIPTION
1	1	51607	FLUID CYLINDER
2	1	51609	MANIFOLD, SUCTION
3	12	25167	CAPSCREW
4	3	50027	VALVE, SUCTION
5	3	25164	SPRING, SUCTION VALVE
6	3	50004	GUIDE, SUCTION VALVE
7	3	50025	SEAT, SUCTION VALVE
8	9	25173	O-RING
9	6	25170	RING, BACKUP
10	3	25287	O-RING
11	3	50028	VALVE, DISCHARGE
12	3	25506	SPRING, DISCHARGE VALVE
13	3	50026	SEAT, DISCHARGE VALVE
14	3	25638	O-RING
15	3	25171	RING, BACKUP
16	3	50003	PLUG, TOP
17	6	25165	O-RING
18	3	25172	RING, BACKUP
19	3	50066	STUFFING BOX
20	1	50228	PLATE, FLUID END ADAPTING
21	12	26431	CAPSCREW
23	3	COMM	PLUNGER, 7/8" DIA.
		50222	PLUNGER, 1-1/16" DIA.
		50223	PLUNGER, 1-3/16" DIA.
		50224	PLUNGER, 1-5/16" DIA.
		50225	PLUNGER, 1-1/2" DIA.

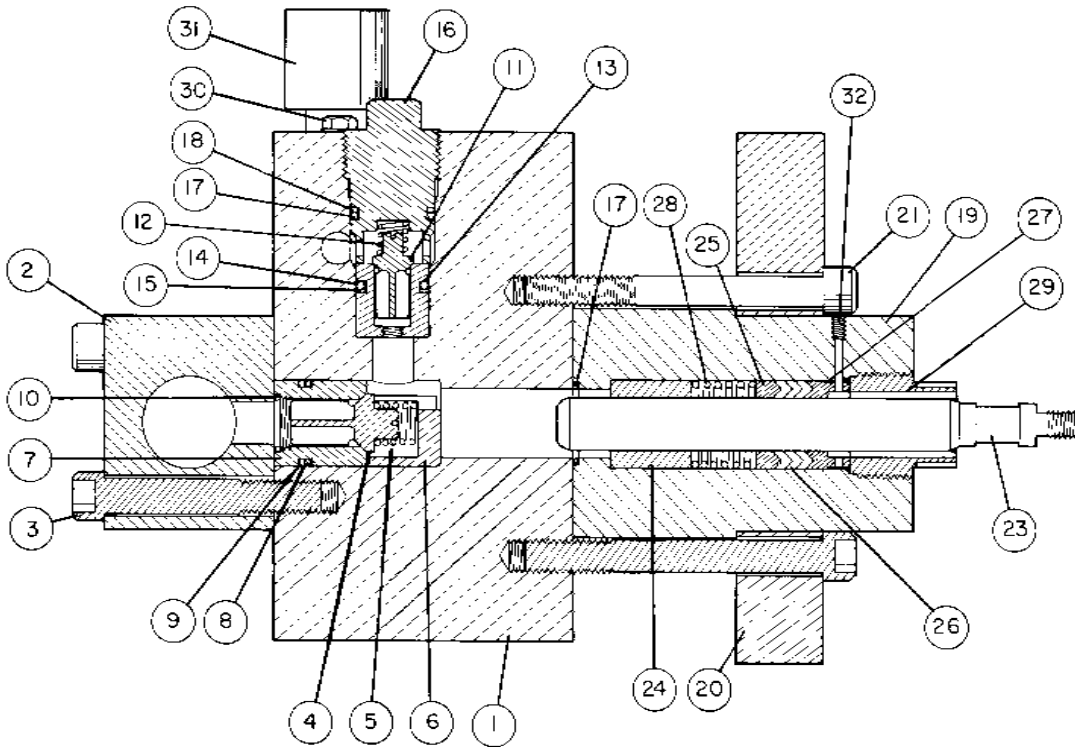
ITEM	QTY	JETSTREAM IMPROVED™ PART NO.	DESCRIPTION
24	3	COMM 50013 50215 50014 50015	THROAT BUSHING, 7/8" THROAT BUSHING, 1-1/16" THROAT BUSHING, 1-3/16" THROAT BUSHING, 1-5/16" THROAT BUSHING, 1-1/2"
25	3	COMM 50016 50229 50017 50018	RING, FRONT PACKING, 7/8" RING, FRONT PACKING, 1-1/16" RING, FRONT PACKING, 1-3/16" RING, FRONT PACKING, 1-5/16" RING, FRONT PACKING, 1-1/2"
26	3	50218 50022 50216 50023 50024	PACKING SET, 7/8" PACKING SET, 1-1/16" PACKING SET, 1-3/16" PACKING SET, 1-5/16" PACKING SET, 1-1/2"
27	3	50226 50019 50227 50020 50021	RING, BACK PACKING, 7/8" RING, BACK PACKING, 1-1/16" RING, BACK PACKING, 1-3/16" RING, BACK PACKING, 1-5/16" RING, BACK PACKING, 1-1/2"
28	3	25166	SPRING, PACKING
29	3	50030	GLAND NUT
30	3	25174	PLUG
31	1	50122 50125	SAFETY HEAD ASSEMBLY (see page 20 for replacement Rupture Discs) SAFETY HEAD ASSEMBLY (see page 20 for replacement Rupture Discs)
		50116 50029	TOOLS (not shown) WRENCH, GLAND NUT TOOL, VALVE SEAT REMOVAL



If your L-375 (L-130) requires major repair, or to achieve pressures up to 40,000 psi
UPGRADE TO JETSTREAM'S UNx FLUID END

THE SIMPLE UNx

- 55% fewer parts than the L-375 (L-130)
- One piece of brass
- One packing ring
- One valve
- No fluid cylinder to crack
- Cuts your pump's downtime and repair costs
- No special tools needed
- Utilizes cartridge-style overhaul
- In-line valve design



ITEM	QTY	JETSTREAM IMPROVED™ PART NO.	DESCRIPTION
1	1	50213	FLUID CYLINDER
2	1	50212	MANIFOLD, SUCTION
3	12	25167	CAPSCREW
4	3	50027	VALVE, SUCTION
5	3	25164	SPRING, SUCTION VALVE
6	3	50004	GUIDE, SUCTION VALVE
7	3	50025	SEAT, SUCTION VALVE
8	9	25173	O-RING
9	6	25170	RING, BACKUP
10	3	25287	O-RING
11	3	50028	VALVE, DISCHARGE
12	3	25506	SPRING, DISCHARGE VALVE
13	3	50026	SEAT, DISCHARGE VALVE
14	3	25638	O-RING
15	3	25171	RING, BACKUP
16	3	50003	PLUG, TOP
17	6	25165	O-RING
18	3	25172	RING, BACKUP
19	3	50066	STUFFING BOX
20	1	50228	PLATE, FLUID END ADAPTING
21	12	25168	CAPSCREW
23	3	COMM	PLUNGER, 7/8" DIA.
		50222	PLUNGER, 1-1/16" DIA.
		50223	PLUNGER, 1-3/16" DIA.
		50224	PLUNGER, 1-5/16" DIA.
		50225	PLUNGER, 1-1/2" DIA.

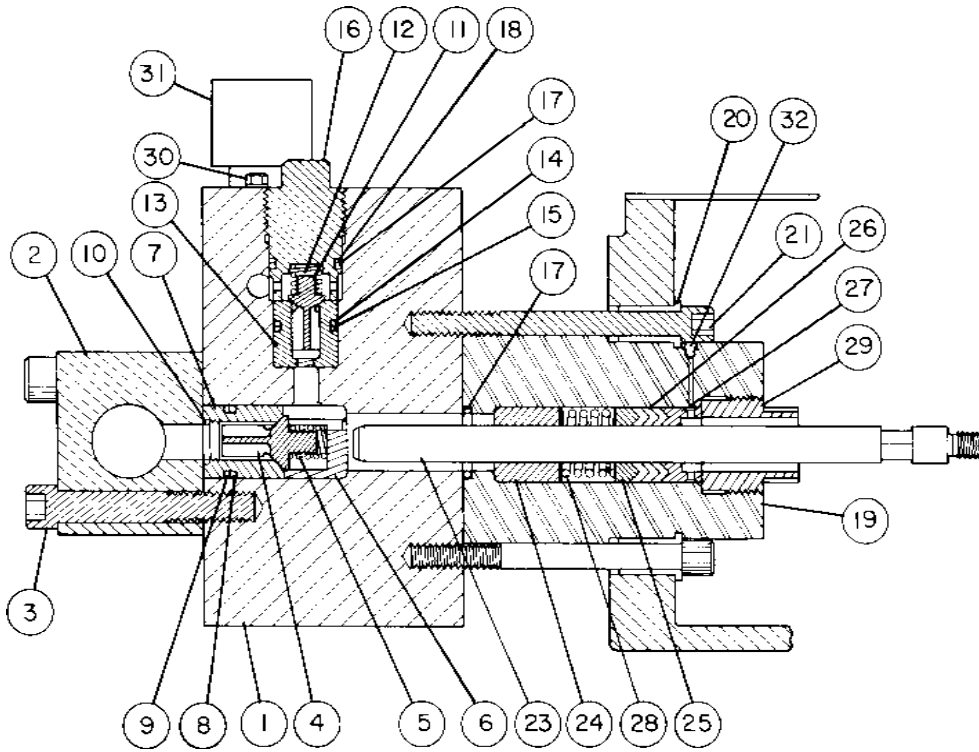
ITEM	QTY	JETSTREAM IMPROVED™ PART NO.	DESCRIPTION
24	3	COMM 50013 50215 50014 50015	THROAT BUSHING, 7/8" THROAT BUSHING, 1-1/16" THROAT BUSHING, 1-3/16" THROAT BUSHING, 1-5/16" THROAT BUSHING, 1-1/2"
25	3	COMM 50016 50229 50017 50018	RING, FRONT PACKING, 7/8" RING, FRONT PACKING, 1-1/16" RING, FRONT PACKING, 1-3/16" RING, FRONT PACKING, 1-5/16" RING, FRONT PACKING, 1-1/2"
26	3	COMM 50022 50216 50023 50024	PACKING SET, 7/8" PACKING SET, 1-1/16" PACKING SET, 1-3/16" PACKING SET, 1-5/16" PACKING SET, 1-1/2"
27	3	COMM 50019 50227 50020 50021	RING, BACK PACKING, 7/8" RING, BACK PACKING, 1-1/16" RING, BACK PACKING, 1-3/16" RING, BACK PACKING, 1-5/16" RING, BACK PACKING, 1-1/2"
28	3	25166	SPRING, PACKING
29	3	50030	GLAND NUT
30	3	25174	PLUG
31	1	50122 50125	SAFETY HEAD ASSEMBLY (see page 20 for replacement Rupture Discs) SAFETY HEAD ASSEMBLY (see page 20 for replacement Rupture Discs)
		50116 50029	TOOLS (not shown) WRENCH, GLAND NUT TOOL, VALVE SEAT REMOVAL

**If your L-450 (L-200) requires major repair, or to achieve pressures up to 40,000 psi
UPGRADE TO JETSTREAM'S UN_x FLUID END**



THE SIMPLE UN_x

- 60% fewer parts than the L-450 (L-200)
- One piece of brass
- One packing ring
- One valve
- No fluid cylinder to crack
- Cuts your pump's downtime and repair costs
- No special tools needed
- Utilizes cartridge-style overhaul
- In-line valve design



ITEM	QTY	JETSTREAM IMPROVED™ PART NO.	DESCRIPTION
1	1	50140	FLUID CYLINDER
2	1	50049	MANIFOLD, SUCTION
3	12	25167	CAPSCREW
4	3	50027	VALVE, SUCTION
5	3	25164	SPRING, SUCTION VALVE
6	3	50004	GUIDE, SUCTION VALVE
7	3	50025	SEAT, SUCTION VALVE
8	9	25173	O-RING
9	6	25170	RING, BACKUP
10	3	25287	O-RING
11	3	50028	VALVE, DISCHARGE
12	3	25506	SPRING, DISCHARGE VALVE
13	3	50026	SEAT, DISCHARGE VALVE
14	3	25638	O-RING
15	3	25171	RING, BACKUP
16	3	50003	PLUG, TOP
17	6	25165	O-RING
18	3	25172	RING, BACKUP
19	3	50066	STUFFING BOX
20	12	50115	SPACER
21	12	25168	CAPSCREW
23	3	COMM	PLUNGER, 7/8" DIA.
		50010	PLUNGER, 1-1/16" DIA.
		50314	PLUNGER, 1-3/16" DIA.
		50011	PLUNGER, 1-5/16" DIA.
		50012	PLUNGER, 1-1/2" DIA.

ITEM	QTY	JETSTREAM IMPROVED™ PART NO.	DESCRIPTION
24	3	COMM 50013 50215 50014 50015	THROAT BUSHING, 7/8" THROAT BUSHING, 1-1/16" THROAT BUSHING, 1-3/16" THROAT BUSHING, 1-5/16" THROAT BUSHING, 1-1/2"
25	3	COMM 50016 50229 50017 50018	RING, FRONT PACKING, 7/8" RING, FRONT PACKING, 1-1/16" RING, FRONT PACKING, 1-3/16" RING, FRONT PACKING, 1-5/16" RING, FRONT PACKING, 1-1/2"
26	3	COMM 50022 50216 50023 50024	PACKING SET, 7/8" PACKING SET, 1-1/16" PACKING SET, 1-3/16" PACKING SET, 1-5/16" PACKING SET, 1-1/2"
27	3	COMM 50019 50227 50020 50021	RING, BACK PACKING, 7/8" RING, BACK PACKING, 1-1/16" RING, BACK PACKING, 1-3/16" RING, BACK PACKING, 1-5/16" RING, BACK PACKING, 1-1/2"
28	3	25166	SPRING, PACKING
29	3	50030	GLAND NUT
30	3	25174	PLUG
31	1	50122 50125	SAFETY HEAD ASSEMBLY (see page 20 for replacement Rupture Discs) SAFETY HEAD ASSEMBLY (see page 20 for replacement Rupture Discs)
		50116 50029	TOOLS (not shown) WRENCH, GLAND NUT TOOL, VALVE SEAT REMOVAL



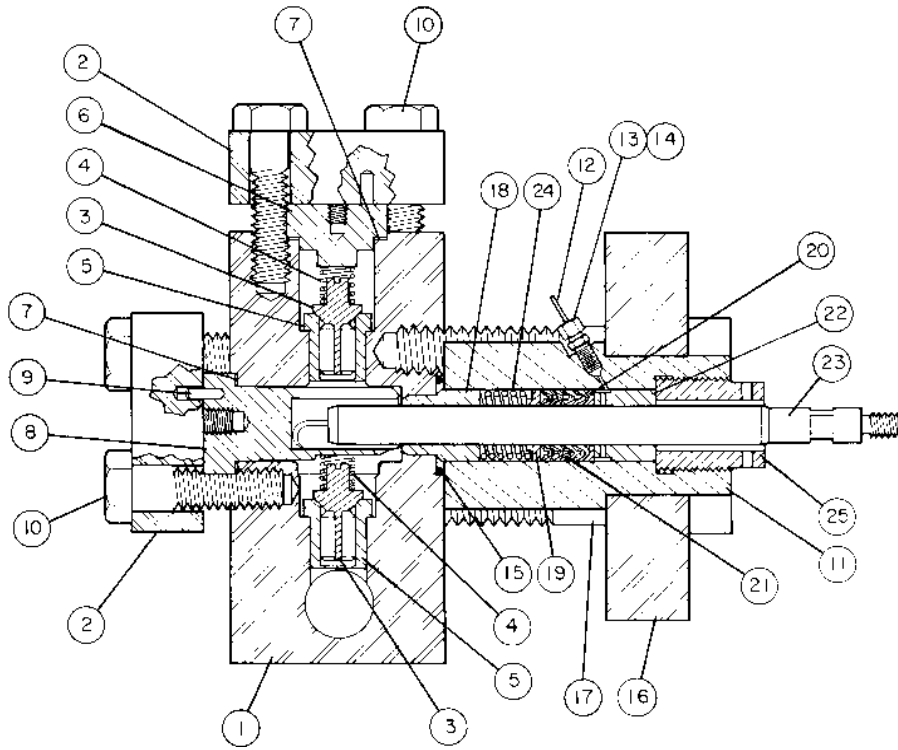
If your L-77 requires major repair, or to achieve pressures up to 40,000 psi

UPGRADE TO JETSTREAM'S UNx FLUID END



THE SIMPLE UNx

- 56% fewer parts than the L-77
- One piece of brass
- One packing ring
- One valve
- No fluid cylinder to crack
- Cuts your pump's downtime and repair costs
- No special tools needed
- Utilizes cartridge-style overhaul
- In-line valve design



ITEM	QTY	JETSTREAM IMPROVED™ PART NO.	DESCRIPTION
1	1	25219	FLUID CYLINDER WITH VALVE SEATS
2	6	50094	PLATE, CLAMP
3	6	50028	VALVE, SUCTION OR DISCHARGE
4	6	25506	SPRING, VALVE
5	6	50067	SEAT, SUCTION OR DISCHARGE
6	3	50087	COVER, TOP
7	6	25814	GASKET, HEAD
8	3	50074 50075	COVER, FRONT, 3/4" PLUNGER COVER, FRONT, 7/8", 1", 20 mm, 24 mm PLUNGER
9	3	25199	PIN, DOWEL
10	24	25217	CAPSCREW
11	3	50088	STUFFING BOX
12	A/R	25463	TUBING NYLON
13	3	25222	FITTING, TUBING
14	3	25223	INSERT, TUBING
15	3	25124	O-RING
16	1	50094	FLANGE, STUFFING BOX
17	12	25220	CAPSCREW
18	3	50076 50077 50078 50079 50080	THROAT BUSHING, 3/4" THROAT BUSHING, 7/8" THROAT BUSHING, 1" THROAT BUSHING, 20 mm THROAT BUSHING, 24 mm
19	3	50089 50090 50091 50092 50093	RING, FRONT PACKING, 3/4" RING, FRONT PACKING, 7/8" RING, FRONT PACKING, 1" RING, FRONT PACKING, 20 mm RING, FRONT PACKING, 24 mm

ITEM	QTY	JETSTREAM IMPROVED™ PART NO.	DESCRIPTION
20	3	50069 50070 50071 50072 50073	RING, BACK PACKING, 3/4" RING, BACK PACKING, 7/8" RING, BACK PACKING, 1" RING, BACK PACKING, 20 mm RING, BACK PACKING, 24 mm
21	3	50081 50037 50039 50036 50038	PACKING SET, 3/4" PACKING SET, 7/8" PACKING SET, 1" PACKING SET, 20 mm PACKING SET, 24 mm
22	3	50082 50083 50084 50085 50086	RING, BACK PACKING EXTENSION, 3/4" RING, BACK PACKING EXTENSION, 7/8" RING, BACK PACKING EXTENSION, 1" RING, BACK PACKING EXTENSION, 20 mm RING, BACK PACKING EXTENSION, 24 mm
23	3	50527 50526 50676 50095 50096	PLUNGER, 3/4" PLUNGER, 7/8" PLUNGER, 1" PLUNGER, 20 mm PLUNGER, 24 mm
24	3	25218	SPRING, PACKING
25	3	50646	GLAND NUT



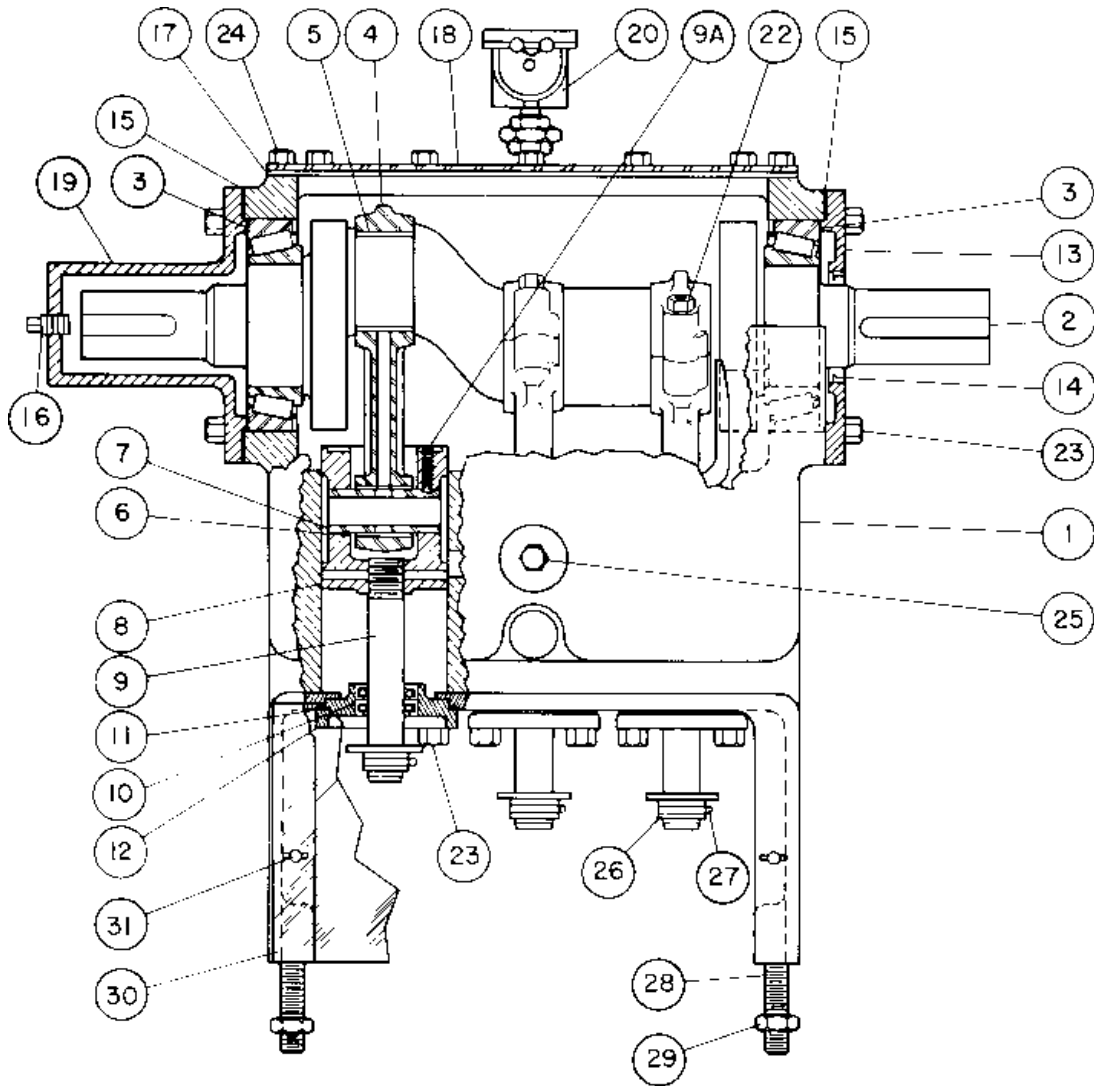
If your PT-33 (75000) requires major repair, or to achieve pressures up to 40,000 psi

UPGRADE TO JETSTREAM'S UNx FLUID END



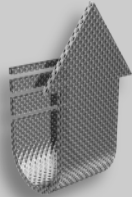
THE SIMPLE UNx

- 54% fewer parts than the PT-33 (75000)
- One piece of brass
- One packing ring
- One valve
- No fluid cylinder to crack
- Cuts your pump's downtime and repair costs
- No special tools needed
- Utilizes cartridge-style overhaul
- In-line valve design



ITEM	QTY	JETSTREAM IMPROVED™ PART NO.	DESCRIPTION
1	1	26425	POWER FRAME
2	1	26427	CRANKSHAFT
3	2	25541	BEARING ASSEMBLY, CRANKSHAFT
4	3	50984	CONNECTING ROD
5	3	25542	BEARING, CONNECTING ROD, STANDARD SIZE
		COMM	BEARING, CONNECTING ROD, .020" UNDERSIZE
		COMM	BEARING, CONNECTING ROD, .040" UNDERSIZE
6	3	25537	BEARING, CROSSHEAD PIN
7	3	50929	PIN, CROSSHEAD
8	3	50316	CROSSHEAD
9	3	50320	STUB, CROSSHEAD, THREADED
	3	50866	STUB, CROSSHEAD, COLLET (not shown)
10	6	25536	SEAL, CROSSHEAD STUB
11	3	25546	GASKET, CROSSHEAD STUB SEAL CAP
12	3	25549	CAP, CROSSHEAD STUB SEAL
13	1	25554	CAP, FRAME, INBOARD

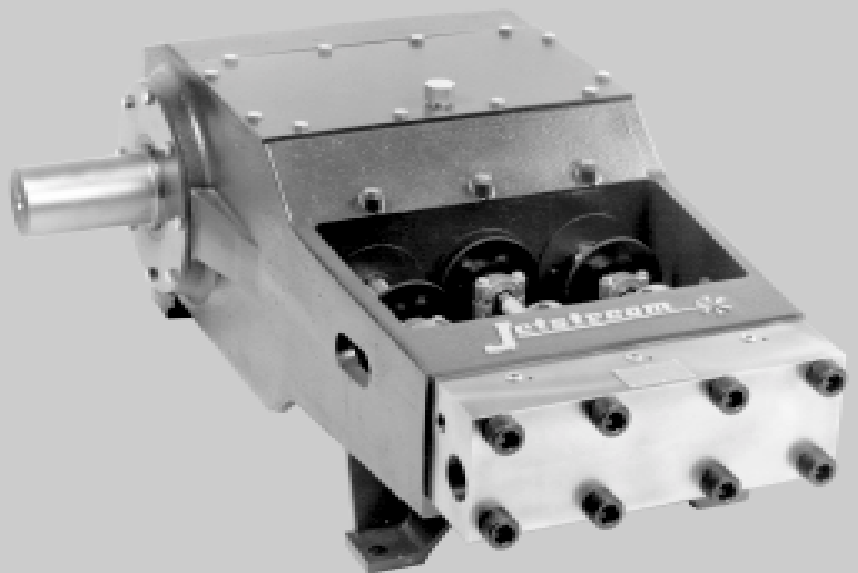
ITEM	QTY	JETSTREAM IMPROVED™ PART NO.	DESCRIPTION
14	1	25553	SEAL, CRANKSHAFT OIL
15	A/R	25558 25558-1 25558-2 25558-3	SHIM, .020" THICK SHIM, .010" THICK SHIM, .0075" THICK SHIM, .005" THICK
16	4	COMM	PLUG
17	1	26429	GASKET, CRANKCASE COVER
18	1	26430	COVER, CRANKCASE
19	1	50317	CAP, CRANKSHAFT COVER
20	1	25235	SWITCH ASSEMBLY, OIL LEVEL INDICATOR
22	6	25770	CAPSCREW
23	18	COMM	CAPSCREW
24	16	COMM	CAPSCREW
25	1	25746	BREATHER, CRANKCASE
26	3	50031	DEFLECTOR, STUB SHAFT
27	3	25221	CLAMP, HOSE
28	4	25862	STUD
29	4	25706	NUT
30	1	50319	COVER, WELL
31	2	25461	SCREW, WING
32	3	50863	NUT, COLLET (not shown)

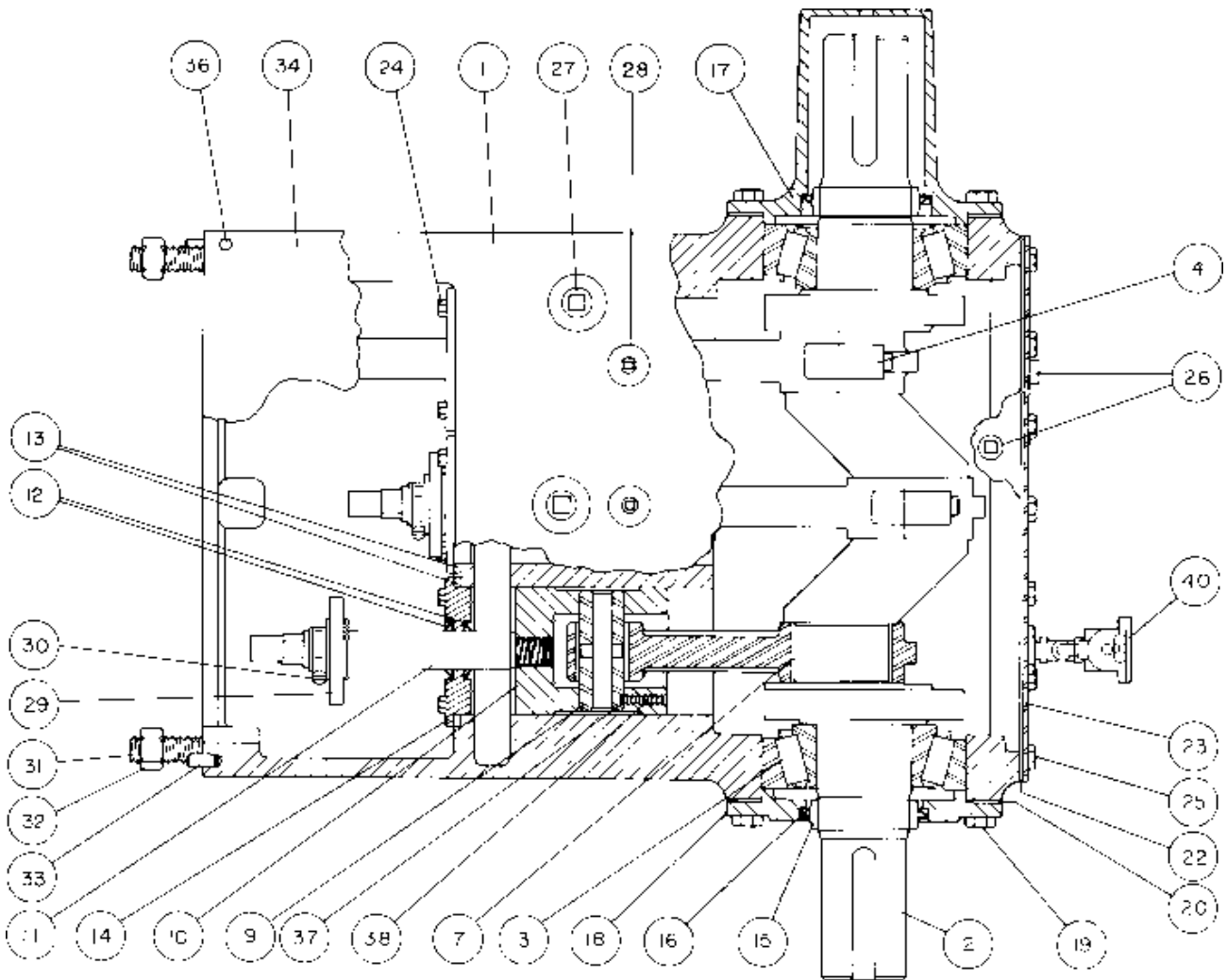


If your L-300 (L-74), PT-33 requires major repair, or to achieve pressures up to 40,000 psi
UPGRADE TO JETSTREAM'S 3000 SERIES BARESHAFT PUMP

BENEFIT FROM ITS HIGHER HORSEPOWER RATING AND STATE-OF-THE-ART UN_x FLUID END.

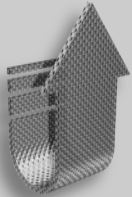
- 125 Horsepower rated
- UN_x Fluid End with cartridge-style repair will reduce pump downtime
- Larger journal bearings
- Stronger Ductile Iron power frame
- Heavy-duty forged crankshaft





ITEM	QTY	JETSTREAM IMPROVED™ PART NO.	DESCRIPTION
1	1	51409	POWER FRAME
2	1	51412	CRANKSHAFT
3	2	26213	BEARING ASSEMBLY, CRANKSHAFT
4	3	51415	CONNECTING ROD
5	6	26350	WASHER
6	6	26356	SHOULDER SCREW
7	3	26205	BEARING, CONNECTING ROD
8	3	51410	BEARING, CROSSHEAD PIN
9	3	50519	PIN, CROSSHEAD
10	3	51424	CROSSHEAD
11	3	51154	ADAPTER, PLUNGER
12	6	26206	SEAL, DIAPHRAGM PLATE OIL
13	3	26118	GASKET, DIAPHRAGM SEAL PLATE
14	3	50513	PLATE, DIAPHRAGM SEAL
15	2	50521	RING, CRANKSHAFT SEAL WEAR
16	2	26208	SEAL, CRANKSHAFT OIL
17	1	25590	COVER, CRANKCASE
18	1	26432	CAP, SEAL END
19	12	COMM	CAPSCREW
20	A/R	51152	SHIM SET

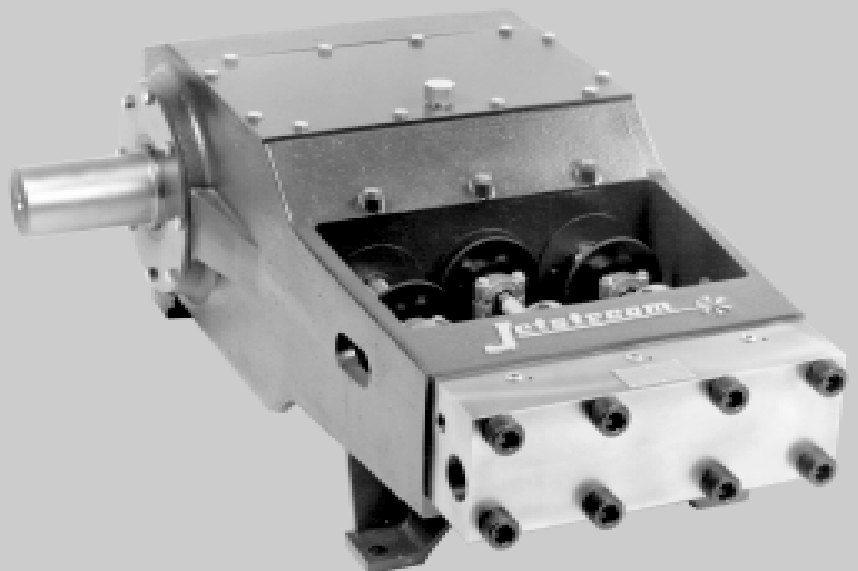
ITEM	QTY	JETSTREAM IMPROVED™ PART NO.	DESCRIPTION
21	1	25646	PLUG
22	1	26211	GASKET, CRANKCASE COVER
23	1	25572	COVER, CRANKCASE
24	6	26435	CAPSCREW
25	18	26437	CAPSCREW
26	2	COMM	PLUG
27	4	26436	PLUG
28	3	26147	PLUG
29	3	51220	DEFLECTOR, STUB
30	3	25962	CLAMP
31	4	25573	STUD
32	4	25604	NUT, HEX
33	2	26298	PIN, DOWEL
34	1	50514	COVER, WELL
35	A/R	COMM	STRIPPING, WEATHER
36	4	26439	CAPSCREW
37	3	26440	SETSCREW
38	3	26441	CAPSCREW
39	1	26124	BUSHING
40	1	26438	INDICATOR, OIL LEVEL
41	1	COMM	TEE
42	1	50496	NIPPLE
43	1	COMM	NIPPLE
44	1	COMM	ELBOW
45	1	COMM	BUSHING
46	1	26443	PETCOCK

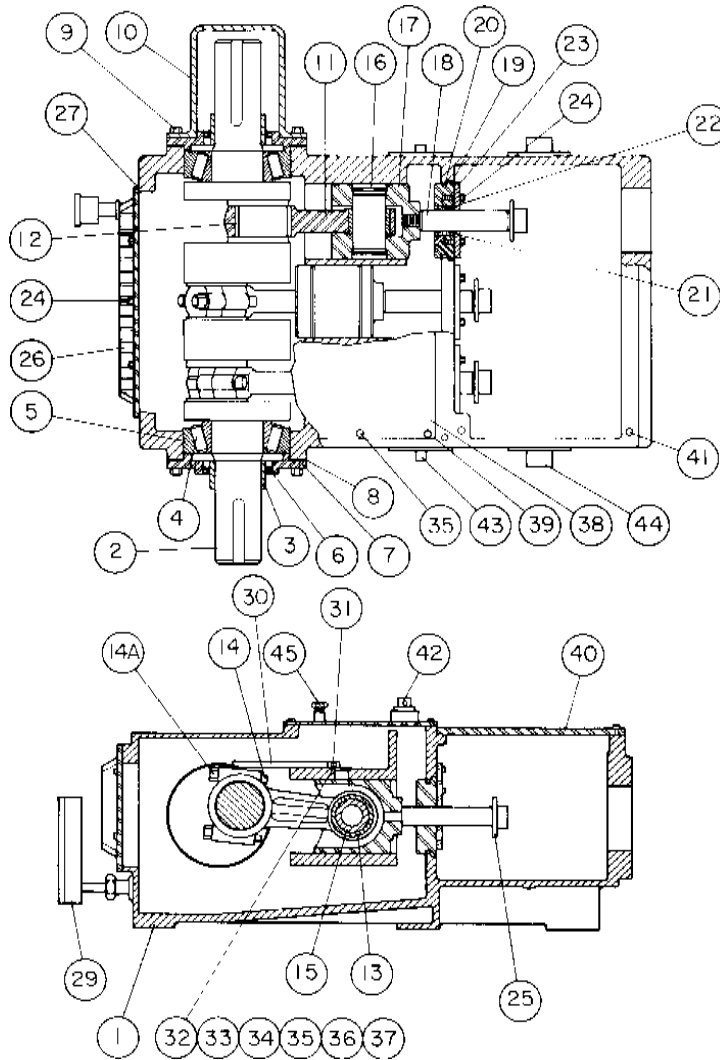


If your L-450 (L-200) requires major repair, or to achieve pressures up to 40,000 psi
UPGRADE TO JETSTREAM'S 4200 SERIES BARESHAFT PUMP

**BENEFIT FROM ITS HIGHER
HORSEPOWER RATING AND STATE-
OF-THE-ART UNx FLUID END.**

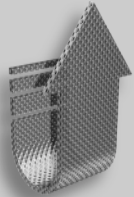
- 300 Horsepower rated
- UNx Fluid End with cartridge-style repair will reduce pump downtime
- Larger journal bearings
- Stronger Ductile Iron power frame
- Heavy-duty forged crankshaft





ITEM	QTY	JETSTREAM IMPROVED™ PART NO.	DESCRIPTION
1	1	25233	POWER FRAME
2	1	25205	CRANKSHAFT
3	2	25252	SPACER, CRANKSHAFT
4	2	25244	BEARING, CONE, CRANKSHAFT
5	2	25253	BEARING CUP, CRANKSHAFT
6	2	25201	SEAL, CRANKSHAFT OIL
7	2	25239	HOUSING, MAIN BEARING
8	A/R	25243	SHIM SET
9	16	25245	CAPSCREW
10	1	25242	COVER, CRANKSHAFT
11	3	25246	CONNECTING ROD ASSEMBLY
12	3	25230	BEARING, CONNECTING ROD
13	3	25204	BEARING CROSSHEAD PIN
14	6	25301	CAPSCREW
14A	6	25292	NUT
15	3	25197	PIN, CROSSHEAD
16	6	25198	RING, RETAINING
17	3	25256	CROSSHEAD
18	3	50141	ADAPTER, PLUNGER
19	3	50120	DIAPHRAGM

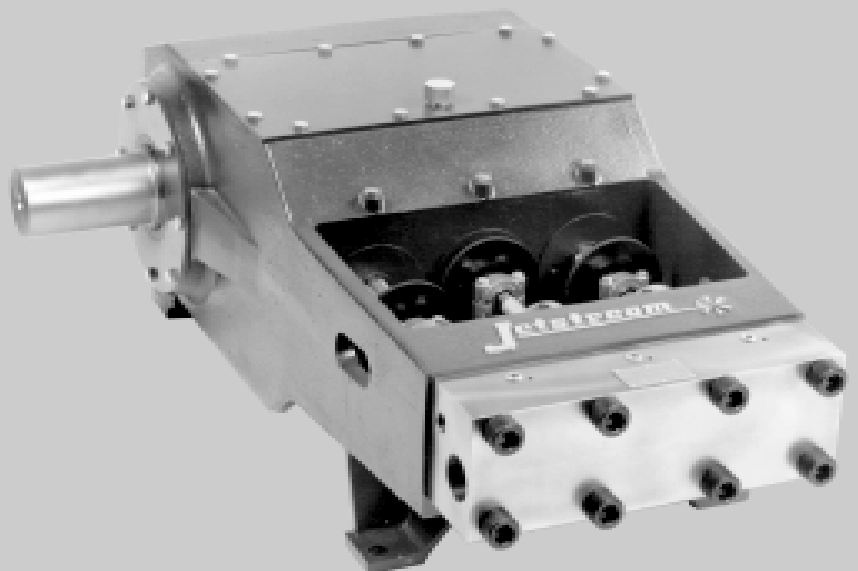
ITEM	QTY	JETSTREAM IMPROVED™ PART NO.	DESCRIPTION
20	3	25190	O-RING
21	3	50008	WIPER SET, ROD
22	3	50007	RING, LANTERN
23	3	50126	COVER, DIAPHRAGM
24	22	25254	CAPSCREW
25	3	50031	DEFLECTOR, CROSSHEAD STUB
26	1	25260	DOOR, POWER FRAME REAR
27	1	25258	GASKET, POWER FRAME REAR DOOR
29	1	25235	SWITCH ASSEMBLY, OIL LEVEL INDICATOR
30	2	25241	SCRAPER, OIL
31	2	25248	MAGNET
32	2	25257	SCREW
33	4	25247	WASHER
34	2	25259	NUT
35	16	25250	CAPSCREW
36	4	25251	WASHER
37	4	25249	WASHER, LOCK
38	1	25240	COVER, TOP FRAME
39	1	25293	GASKET, TOP FRAME COVER
40	1	25114	COVER, WELL
41	4	COMM	CAPSCREW
42	1	50144	PLUG
43	2	25928	PLUG
44	2	COMM	PLUG
45	1	COMM	PLUG

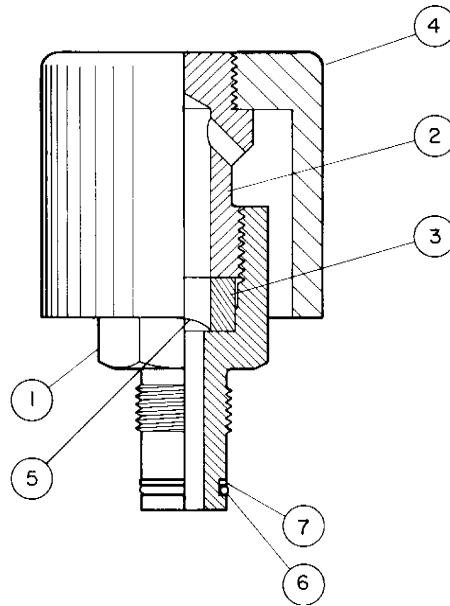


If your L-77 requires major repair, or to achieve pressures up to 40,000 psi
UPGRADE TO JETSTREAM'S 4200 SERIES BARESHAFT PUMP

**BENEFIT FROM ITS HIGHER
HORSEPOWER RATING AND STATE-
OF-THE-ART UNx FLUID END.**

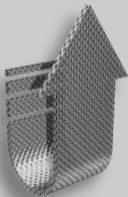
- 300 Horsepower rated
- UNx Fluid End with cartridge-style repair will reduce pump downtime
- Larger journal bearings
- Stronger Ductile Iron power frame
- Heavy-duty forged crankshaft



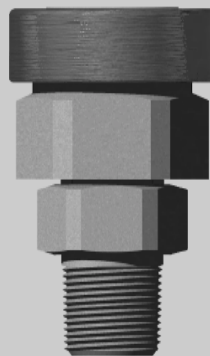


ITEM	QTY	JETSTREAM IMPROVED™ PART NO.	DESCRIPTION
		50122	COMPLETE SAFETY PRESSURE HEAD ASSEMBLY (consisting of the following:)
1	1	50142	HEAD
2	1	50145	PLUG
3	1	50150	RING
4	1	50161	GUARD
5	1	25226	DISC, RUPTURE, 0 - 10,000 PSI OPERATING PRESSURE
		25456	DISC, RUPTURE, 10,000 - 20,000 PSI OPERATING PRESSURE
6	1	25298	O-RING
7	1	25300	RING, BACKUP

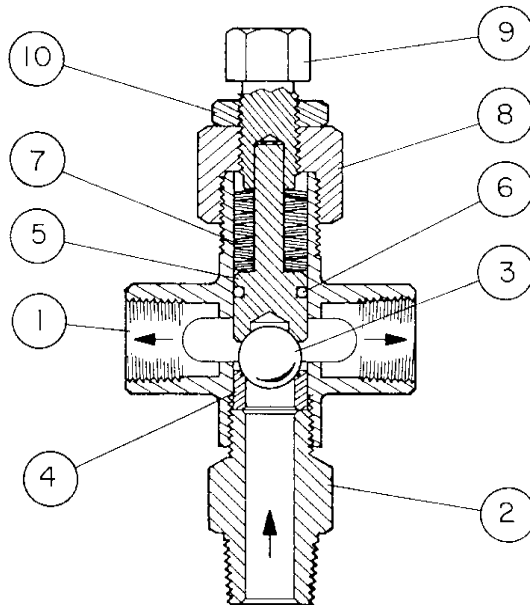
UPGRADE TO JETSTREAM'S RUPTURE DISC ASSEMBLY



Replacing your Butterworth Safety Pressure Head with a Jetstream Rupture Disc Assembly will give you additional safety and will save you money with lower replacement disc costs.

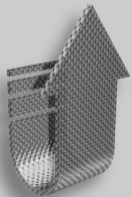


- Coin-proof seat prevents dangerous use of coin instead of proper disc
- Lower replacement disc costs
- Working pressures up to 20,000 psi



ITEM	QTY	1" NPT 6,000 PSI - 10,000 PSI	1" NPT 10,000 PSI - 16,000 PSI	2" NPT 8,000 PSI - 10,000 PSI	DESCRIPTION
1	1	25405	25405	26342	BODY
2	1	25398	26345	26326	FRAME, SEAT
3*	1	—	—	—	BALL (only available with kit below)
4*	1	—	—	—	SEAT (only available with kit below)
5	1	25403	26328	26338	PLUNGER
6*	1	26041	26041	26331	O-RING, PLUNGER
7	1	25399	26341	26334	SPRING SET
8	1	25393	25393	26330	CAP
9	1	25397	25397	26337	ADJUSTING SCREW
10	1	25396	25396	26333	LOCKNUT
	1	N/A	26335	N/A	O-RING, SEAT FRAME (not shown)
*		50337	51376	51359	BALL AND SEAT KIT (includes all "*" items above)

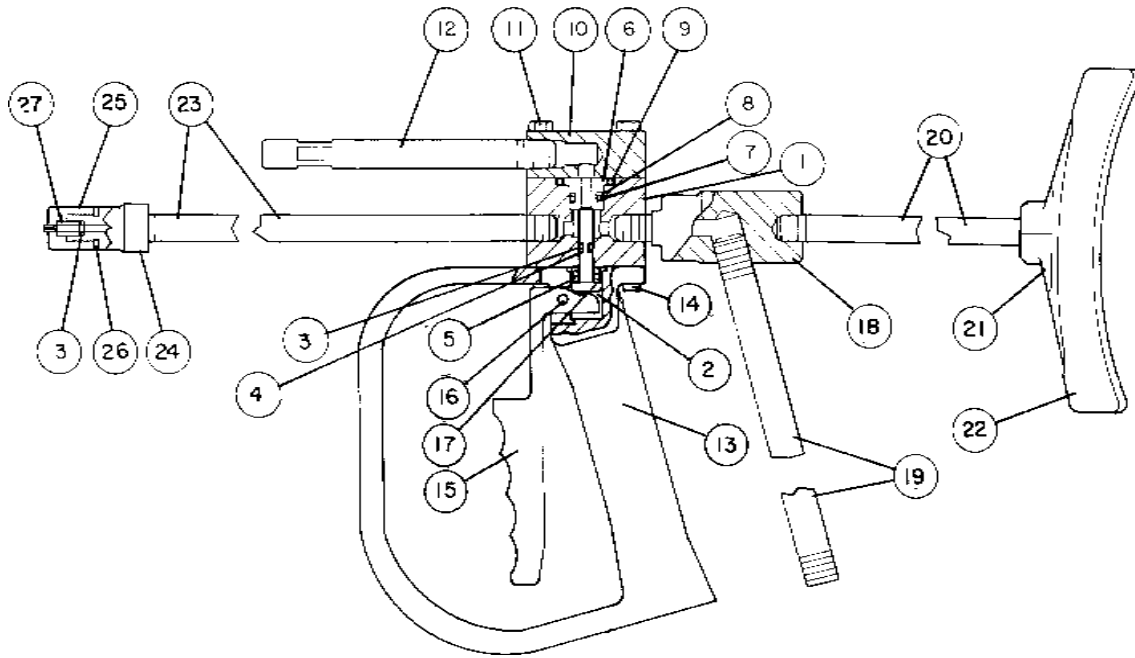
UPGRADE TO JETSTREAM'S SEVERE SERVICE RELIEF VALVE



Upgrade to a Jetstream Severe Service Relief Valve for longer service life, fewer parts and simple cartridge-style repair.



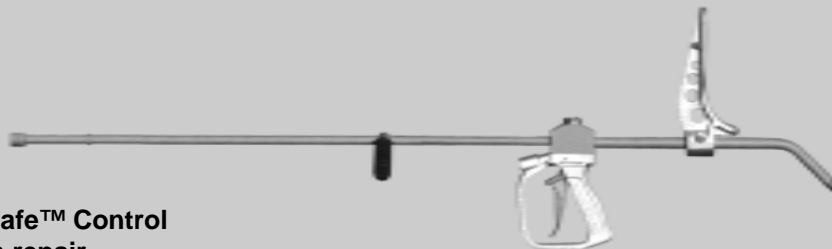
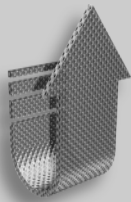
- Only 7 parts
- Tougher ball / seat materials. Tungsten carbide available
- Quick and easy cartridge-style field repair
- Working pressures up to 20,000 psi



ITEM	QTY	JETSTREAM IMPROVED™ PART NO.	DESCRIPTION	ITEM	QTY	JETSTREAM IMPROVED™ PART NO.	DESCRIPTION
1	1	50146	BODY	15	1	52066	TRIGGER
2**	1	50644	VALVE	16	1	26166	PIN
3*	2	25189	O-RING	17	1	26784	BOOT
4*	1	25188	RING, BACKUP	18	1	50057	ADAPTER
5**	1	25210	SPRING, VALVE	19	1	50330	NIPPLE, 10" LONG
6**	1	50643	SEAT	20	1	50127	EXTENSION, 10" LONG
7*	1	25193	O-RING	21	1	50124	SHOULDER STOCK
8*	1	25408	RING, BACKUP	22	1	25692	CUSHION
9*	1	25717	O-RING	23	1	50321	NIPPLE, 48" LONG
10	1	50160	PLATE, DUMP	24	1	50005	ADAPTER, NOZZLE
11	4	25207	CAPSCREW	25	1	50058	CAP, NOZZLE
12	1	50155	TUBE, DUMP	26	1	25191	WASHER, RUBBER
13	1	52067	HANDLE	27	1	—	NOZZLE (specify flow/pressure)
14	4	25206	CAPSCREW				

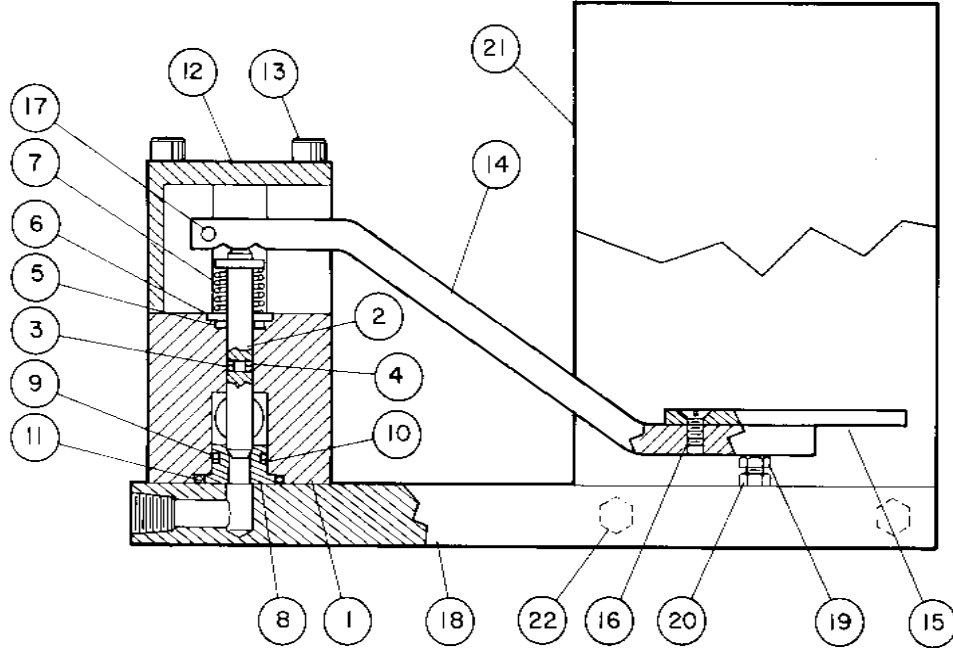
* ORDER AS VALVE AND SEAT KIT, P/N: 50928; ** ORDER AS SEAL KIT, P/N: 50329; * and ** ORDER AS SEAL KIT, P/N: 50334

UPGRADE TO JETSTREAM'S DURASAFE™ PISTOL STYLE CONTROL GUN



Upgrading to a Jetstream DuraSafe™ Control Gun will drastically cut your gun repair downtime and will provide your operator with superior comfort and safety. The DuraSafe™ Series is the waterblast industry's most popular control gun!

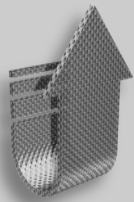
- Fully adjustable, comfortable body pad
- Improved, advanced safety features
- 30 second cartridge-style field repair
- 15,000 and 20,000 psi models
- Uses same cartridge as DuraSafe™ Foot Control Gun



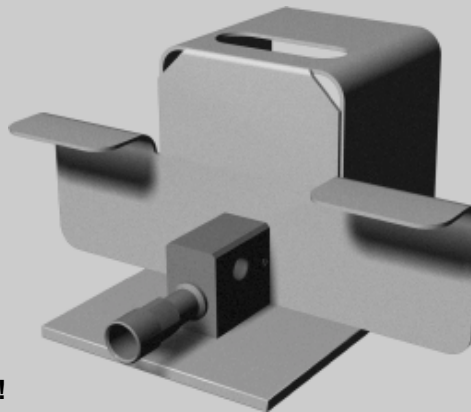
ITEM	QTY	JETSTREAM IMPROVED™ PART NO.	DESCRIPTION	ITEM	QTY	JETSTREAM IMPROVED™ PART NO.	DESCRIPTION
1	1	50170	BODY	12	1	50163	HOUSING
2**	1	50156	VALVE	13	4	25269	CAPSCREW
3*	1	25610	O-RING	14	1	50165	LEVER
4*	1	25192	RING, BACKUP	15	1	50323	PEDAL
5*	1	25266	RING, WIPER	16	2	25283	SCREW
6	1	50158	COVER, WIPER	17	1	25262	PIN
7**	1	25280	SPRING, VALVE	18	1	50174	BASE
8**	1	50159	SEAT	19	1	25263	CAPSCREW
9*	1	25126	O-RING	20	1	25274	NUT
10*	1	25127	RING, BACKUP	21	1	50172	GUARD
11*	1	25718	O-RING	22	4	25271	CAPSCREW

* ORDER AS VALVE AND SEAT KIT, P/N: 50327; ** ORDER AS SEAL KIT, P/N: 50331; * and ** ORDER AS SEAL KIT, P/N: 50328

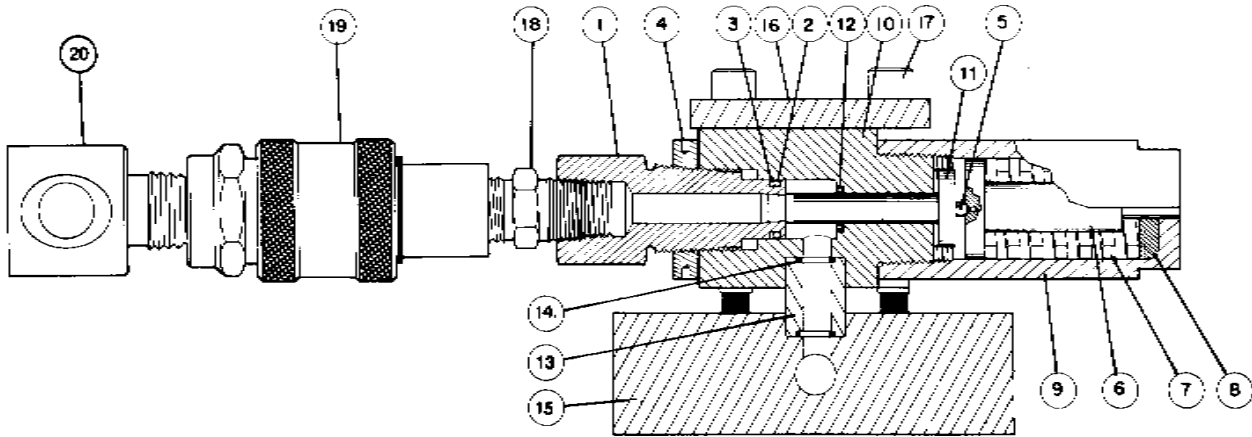
UPGRADE TO JETSTREAM'S DURASAFE™ FOOT STYLE CONTROL GUN



Upgrading to a Jetstream DuraSafe™ Foot Style Control Gun will drastically cut your repair downtime and will provide you with superior reliability and safety. The DuraSafe™ Series is the waterblast industry's most popular control gun!

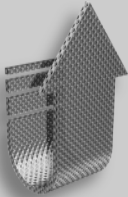


- Special Foot / Hose Guard for added protection
- Improved, advanced safety features
- 30 second cartridge-style field repair
- 15,000 and 20,000 psi models
- Uses same cartridge as DuraSafe™ Pistol Control Gun



ITEM	QTY	JETSTREAM IMPROVED™ PART NO.	DESCRIPTION	ITEM	QTY	JETSTREAM IMPROVED™ PART NO.	DESCRIPTION
1	2	50169	SEAT	12	2	26045	SEAL
2	2	25298	O-RING	13	2	50351	CONNECTOR
3	2	25300	RING, BACKUP	14	4	26053	O-RING
4	2	50171	NUT, LOCK	15	1	50350	MANIFOLD
5	2	25661	BALL	16	1	50353	PLATE
6	2	50154	HOLDER	17	6	26052	CAPSCREW
7	2	25265	SPRING	18	2	50488	NIPPLE, HEX
8	2	50173	DISC	19	2	50989	COUPLING ASSEMBLY
9	2	50168	CAP	20	2	COMM	ELBOW, STREET
10	2	50349	BODY		1	25581	HOSE ASSEMBLY
11	2	50352	VALVE				

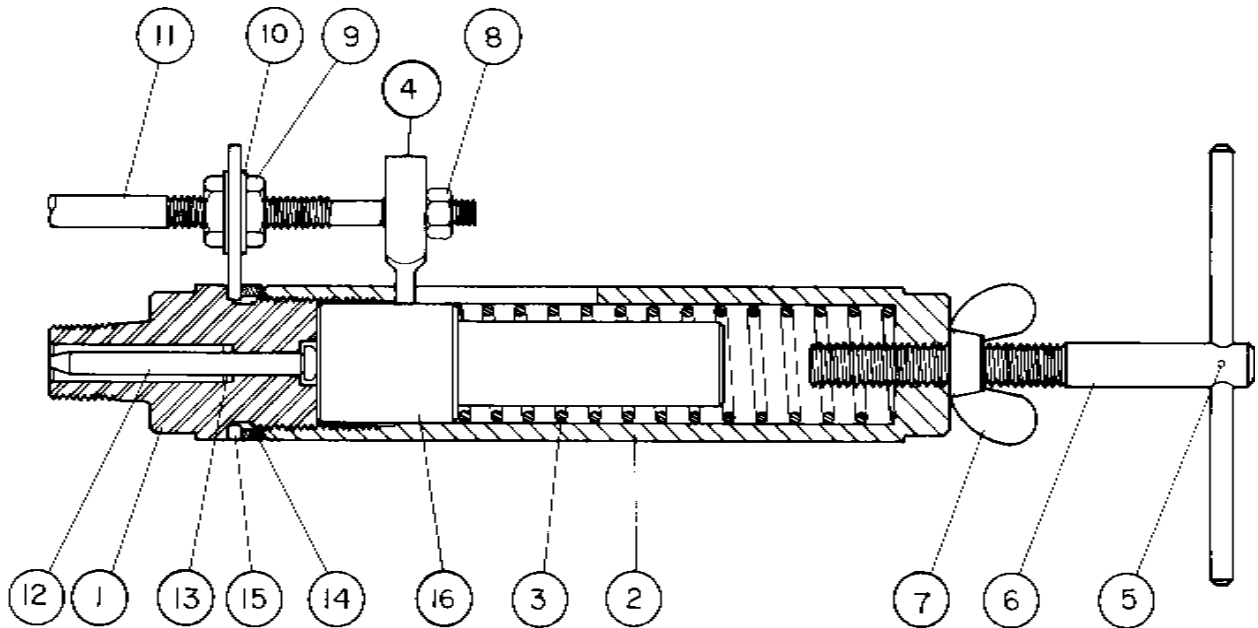
UPGRADE TO JETSTREAM'S MGV (MULTI-GUN VALVE)



Replace your ACPV valve with a Jetstream MGV to simplify and speed up your multi-gun operations. The MGV is portable (mounting on unit not required) and can be quickly connected or disconnected in your hose string when you need it.

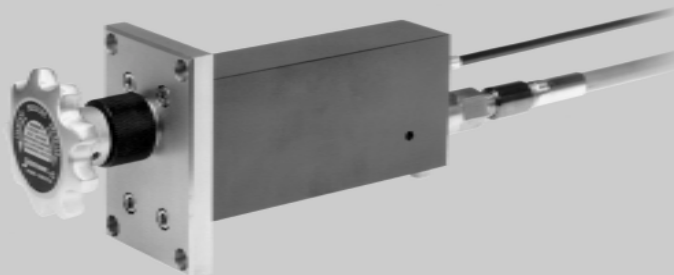
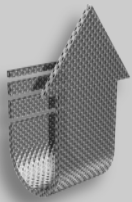


- Simple hand adjustment. (No wrenches required)
- No internal orifices to change.
- 3 minute cartridge-style field repair.
- 10,000, 15,000 and 20,000 psi models.
- Uses same cartridge as Jetstream's By-Pass Valve.



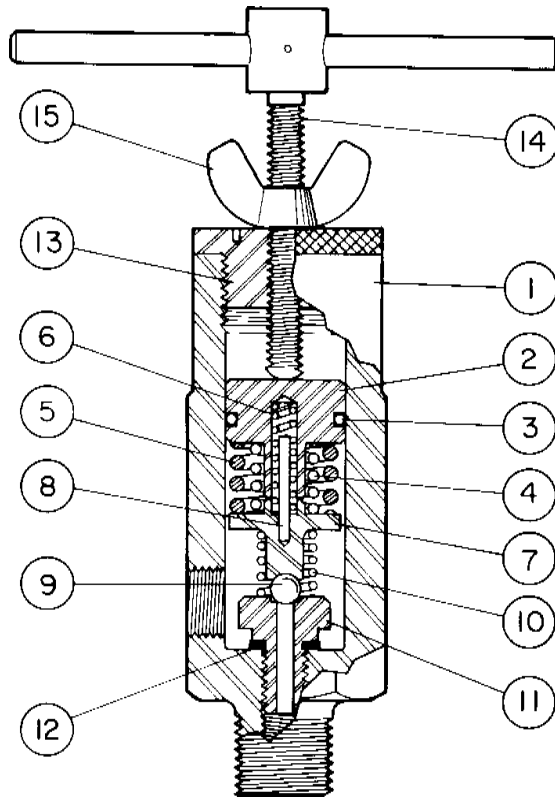
ITEM	QTY	JETSTREAM IMPROVED™ PART NO.	DESCRIPTION	ITEM	QTY	JETSTREAM IMPROVED™ PART NO.	DESCRIPTION
		51414	ASSEMBLY	9	2	25277	NUT
1	1	50854	BODY	10	2	25249	WASHER
2	2	50870	CYLINDER	11	1	50197	CABLE, THROTTLE CONTROL (specify length)
3	1	25273	SPRING	12	1	50859	PISTON
4	1	50176	ACTUATOR	13	1	25623	SEAL
5	1	25285	PIN	14	1	51438	SPACER
6	1	50181	ADJUSTING SCREW ASSY.	15	1	50861	SUPPORT
7	1	25739	NUT	16	1	50195	RETAINER, SPRING
8	1	25289	NUT				

UPGRADE TO JETSTREAM'S HYDRO THROTTLE



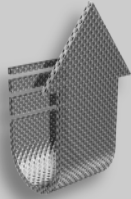
- 3 minute cartridge-style field repair
- Fast down-throttle adjustment for greater safety
- No difficult adjustments

- Requires only light hand force to set engine speed
- 15,000 and 20,000 psi models

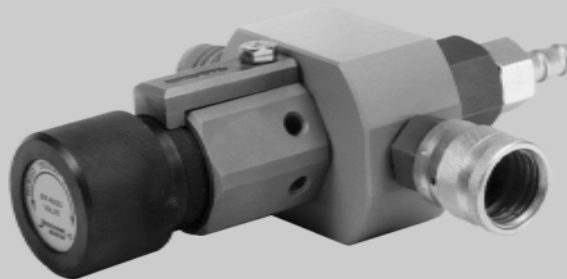


ITEM	QTY	JETSTREAM IMPROVED™ PART NO.	DESCRIPTION	ITEM	QTY	JETSTREAM IMPROVED™ PART NO.	DESCRIPTION
		51418	ASSEMBLY	8	1	25464	PIN
1	1	50187	BODY	9	1	25661	BALL
2	1	50203	PISTON	10	1	25284	SPRING, BALL SEAT
3	1	25465	O-RING	11	1	50199	SEAT, BALL
4	1	25279	SPRING, MEDIUM	12	1	50193	GASKET, BALL SEAT
5	1	25281	SPRING, LARGE	13	1	50180	CAP
6	1	25276	SPRING, SMALL	14	1	50185	SCREW ASSEMBLY
7	1	50177	PLATE, SPRING	15	1	25282	NUT, WING

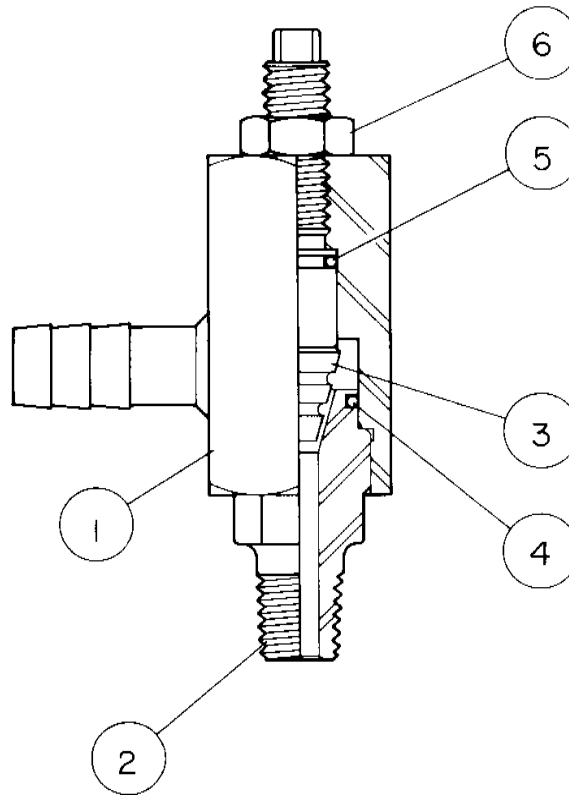
UPGRADE TO JETSTREAM'S HAND-ADJUSTABLE BY-PASS VALVE



The Jetstream Hand Adjustable By-Pass Valve performs the same function as Butterworth's Hydro Valve, yet it is easier to repair and provides longer service life.

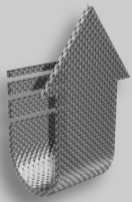


- Extra long valve / seat life.
- No loose springs during repair.
- 3 minute cartridge-style field repair.
- Easy adjustment.
- 10,000, 15,000 and 20,000 psi models.
- Uses same cartridge as Jetstream's MGV.



ITEM	QTY	JETSTREAM IMPROVED™ PART NO.	DESCRIPTION
		51510	ASSEMBLY
1	1	51503	BODY
2	1	51499	SEAT
3	1	51497	VALVE
4	1	25467	O-RING
5	1	25298	O-RING
6	1	51507	NUT, LOCK

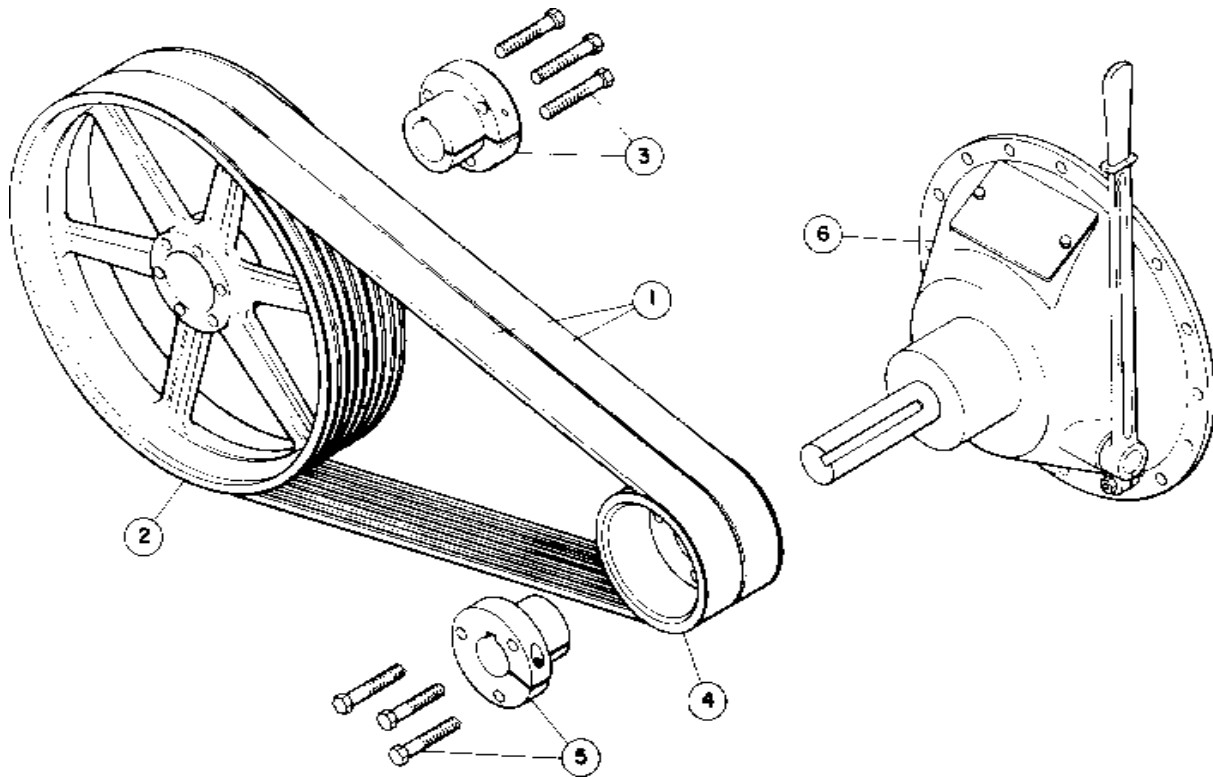
UPGRADE TO JETSTREAM'S WRENCH ADJUSTABLE BY-PASS VALVE



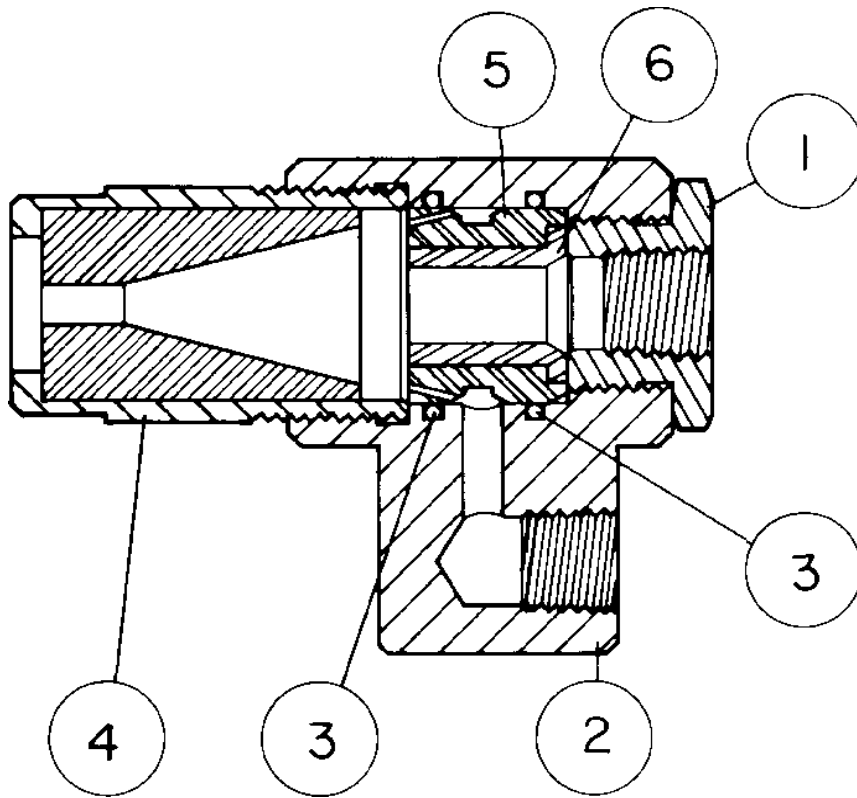
The Jetstream Wrench Adjustable By-Pass Valve can be used in place of Butterworth's Flow Control Valve and is less costly to repair. It uses a tungsten carbide ball for extended throttling service.



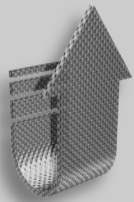
- Economical cartridge-style field repair.
- Longer service life.
- Smooth and precise setting.



ITEM	QTY	JETSTREAM IMPROVED™ PART NO.	DESCRIPTION
100 SERIES ENGINE DRIVE			
1	2	25437	BELT
2	1	25443	SHEAVE, PUMP
3	1	25143	BUSHING
4	1	25318	SHEAVE, DRIVE
5	1	25144	BUSHING
6	1	25140	POWER TAKEOFF ASSEMBLY
100 SERIES ELECTRIC DRIVE			
1	2	25437	BELT
2	1	25443	SHEAVE, PUMP
3	1	25143	BUSHING
4	1	25445	SHEAVE, DRIVE
5	1	25441	BUSHING
6	1	—	POWER TAKEOFF ASSEMBLY
600 SERIES ENGINE DRIVE			
1	2	25446	BELT
2	1	25436	SHEAVE, PUMP
3	1	25438	BUSHING
4	1	25442	SHEAVE, DRIVE
5	1	25760	BUSHING
6	1	25917	POWER TAKEOFF ASSEMBLY
800 SERIES ENGINE DRIVE			
1	2	25444	BELT
2	1	25439	SHEAVE, PUMP
3	1	25448	BUSHING
4	1	25447	SHEAVE, DRIVE
5	1	25450	BUSHING
6	1	25468	POWER TAKEOFF ASSEMBLY



ITEM	QTY	JETSTREAM IMPROVED™ PART NO.	DESCRIPTION
1	1	50868	CONNECTOR
2	1	COMM	BODY
3	2	25169	O-RING
4	1	50860	NOZZLE ASSEMBLY
5	1	50862	NOZZLE, WATER ORIFICE (specify flow and pressure)
6	1	50856	INSERT

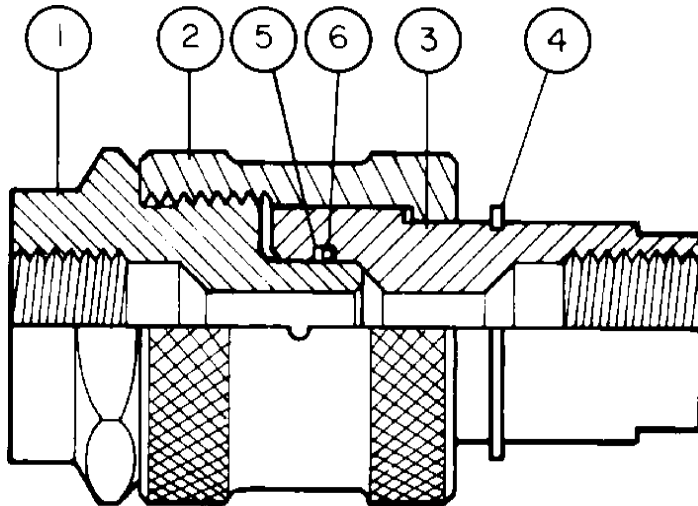


Replacing your Butterworth Abrasive Injector with a Jetstream Abrasive Nozzle Injector will increase your production and lower your downtime.

UPGRADE TO JETSTREAM'S ABRASIVE NOZZLE



- Smaller and lighter than Butterworth's Abrasive Injector
- Integral water shut-off
- Long-life boron carbide nozzle
- 15,000 psi rated



ITEM	QTY	JETSTREAM IMPROVED™ PART NO.	DESCRIPTION
1	1	50990	PLUG
2	1	50991	NUT
3	1	50992	SOCKET
4	1	25128	RING, RETAINING
5	1	25127	RING, BACKUP
6	1	25126	O-RING



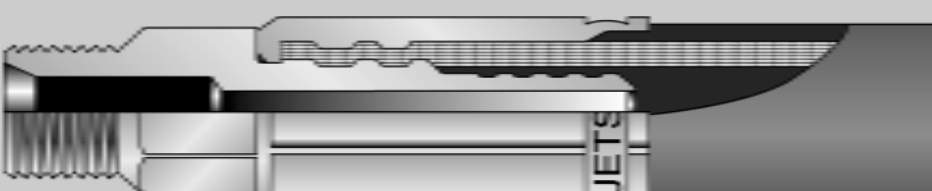
Switch to the toughest quick-connect hose coupling on the market.

UPGRADE TO JETSTREAM'S TWISLOK™ COUPLING



- Acme threads withstand the roughest field treatment
- Heavy-duty cartridge-style seal
- Seal surface protected when disconnected
- 3/8", 1/2" 3/4" and 1" NPT
- 15,000 psi rated
- Stainless steel

JETSTREAM NO-BLO™ (RUBBER) WATERBLAST HOSE



Do not risk serious operator injury from an end fitting blowing off. Use Jetstream NO-BLO™ waterblast hose.

- NO-BLO™ end fittings that will not blow off, for maximum safety
- Operating pressures to 20,000 psi with burst pressures to 50,000 psi
- Sizes 1/4" to 1" I.D.

JETSTREAM MANUFACTURES A COMPLETE LINE OF REPLACEMENT PARTS FOR ALL PUMPS

Jetstream understands how critical time is in the waterblast industry. Because of this, Jetstream ships 98% of all orders the same day received. Our Application Specialists and Shipping Personnel are knowledgeable and know the fastest, most cost-effective way to get the products to the customer when they need them.



JETSTREAM'S AROUND-THE-CLOCK MANUFACTURING FACILITY.

Jetstream is a major manufacturer of waterblast systems, pumps, accessories and replacement parts.

Jetstream has been manufacturing waterblast products for over 20 years and has earned a reputation of producing quality products. All parts are machined on CNC (Computer Numerical Controlled) machines resulting in superior accuracy — every single time. Our shop runs 24 hours around-the-clock to ensure stock on parts when our customers need them.

Jetstream's engineers review parts designs and make improvements to materials and tolerances to give you the best product possible. All products are evaluated at our test facility to ensure they meet Jetstream's high, stringent standards.



SERVICE SECOND TO NONE

Service means helping the customer find the right products for the job, making sure they have everything they need and getting products to them when they need them.

Jetstream's trained Application Specialists are here to help the customer find solutions, not to just sell products. Whether they need help troubleshooting a pump problem or deciding on the right cleaning equipment for that upcoming job, our Application Specialists are here to serve.

Jetstream manufactures and stocks all parts in-house, giving us total control over inventory. Jetstream also ships 98% of orders out the very same day they are received — so **every waterblast part and accessory is available when you need it!**

Jetstream of Houston, Inc.
4930 Cranswick
Houston, TX 77041

PO Box 79228
Houston, TX 77279

Jetstream of Houston, Inc.
FAX: 713-462-5387

Visit our web site at:
web: www.waterblast.com
eMail: sales@waterblast.com

Jetstream of Houston welcomes the
American Express® Card,
VISA® and MasterCard®



Cards



1-800-231-8192 • (713) 462-7000